



ASX ANNOUNCEMENT

ASX CODE: TMX, TMXOA

CAPITAL STRUCTURE

TMX	- Shares on Issue	346.53m
TMXOA	- Options on Issue	18.24m
	- Unlisted Options	73.18m

DIRECTORS & KEY MANAGEMENT

Dick Sandner	Non-Exec Chairman
Jonathan Lim	Non-Exec Vice Chairman
Alan Coles	Managing Director
Paul Dickson	Non-Exec Director
Ian Hobson	Company Secretary

PRINCIPAL REGISTERED OFFICE

Terrain Minerals Ltd
ABN: 45 116 153 514

Suite 4, Level 1
230 Rokeby Road
Subiaco 6008
Western Australia

Postal Address

PO Box 1702
Subiaco WA 6904

CONTACT

Alan Coles
Terrain Minerals Ltd
PH: +61 8 9381 5558
Fax: +61 8 9381 5551
WEB: www.terrainminerals.com.au
EMAIL: terrain@terrainminerals.com.au

29 March 2012

Company Announcement

AZTEC DOME - GEOPHYSICAL SURVEY TO COMMENCE

Terrain Minerals is pleased to advise that Fugro will commence the downhole geophysical survey at Aztec Dome on Friday 30 March.

The survey is expected to take 10 days and it is anticipated analysis of the results will be completed within the following two weeks.

The aim of the down hole EM survey is to identify any massive nickel sulphide targets occurring within an approximate 300m radius around the diamond drill holes completed in February 2012.

The EM survey involves lowering an electrical probe down the drill hole inducing a magnetic field into the surrounding rocks. Certain rocks (e.g. massive nickel sulphides) give a specific response so they can be targeted in future drilling.

On behalf of the Board:

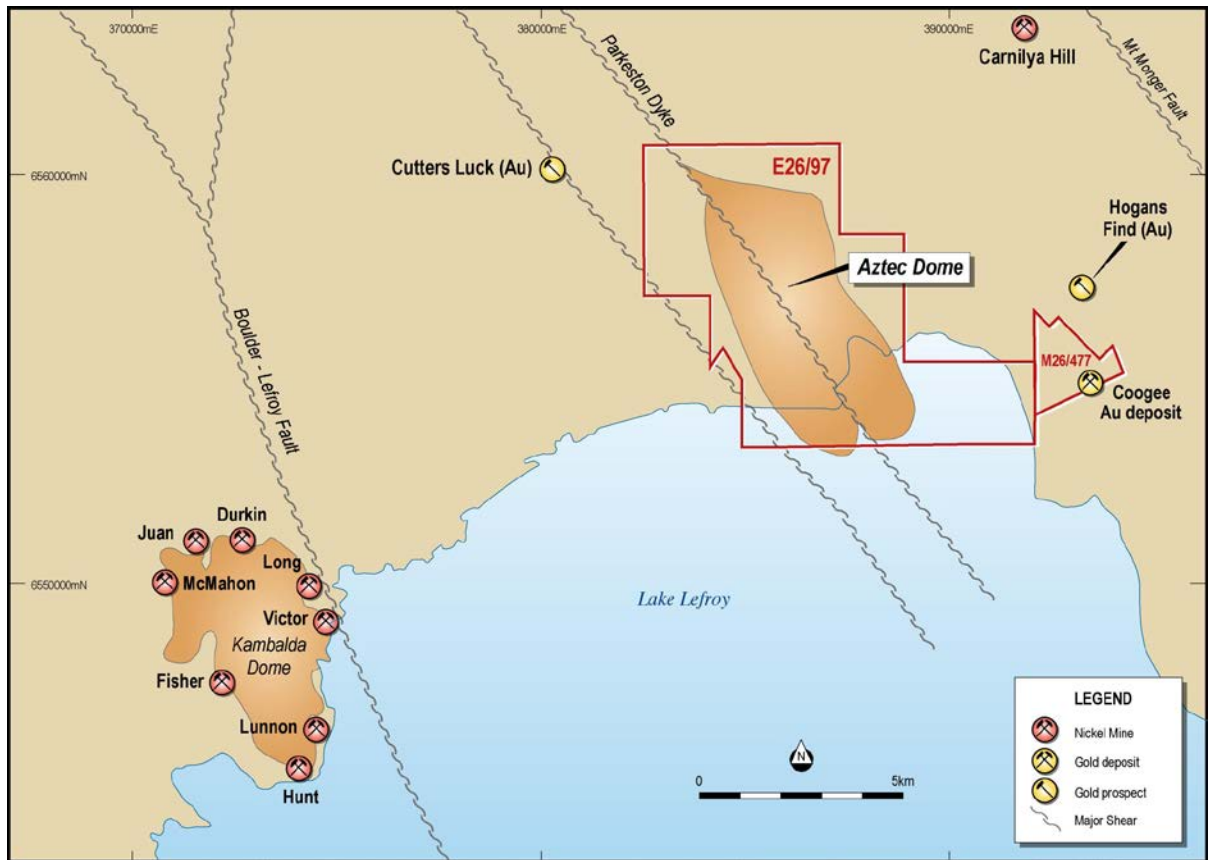
Alan Coles
Managing Director

Terrain Minerals Ltd ABN: 45 116 153 514

Contact
Telephone: +61 8 9381 5558
Facsimile: +61 8 9381 5551
Email: terrain@terrainminerals.com.au

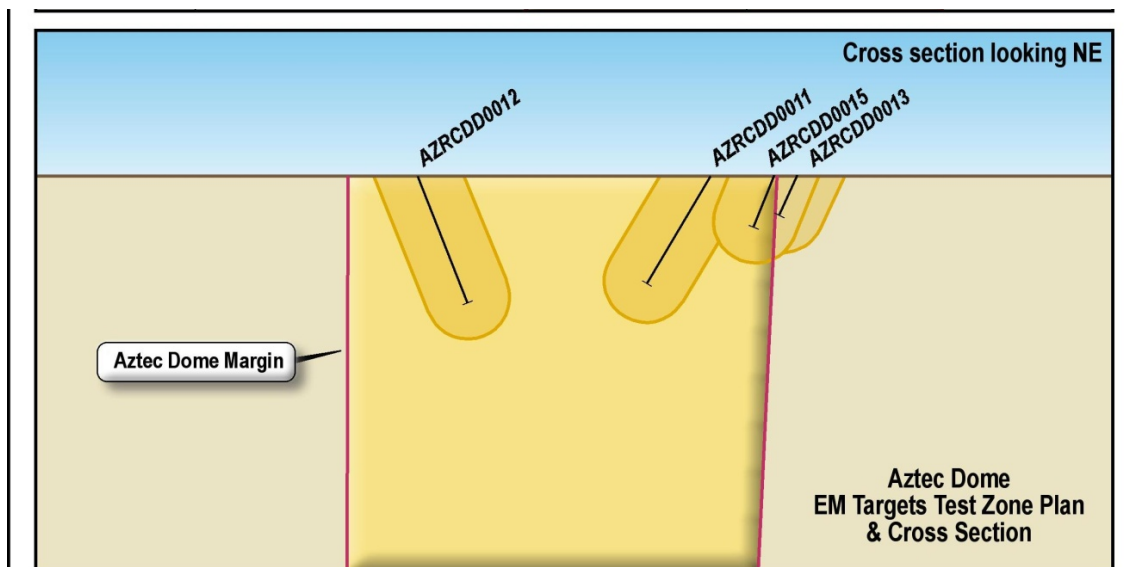
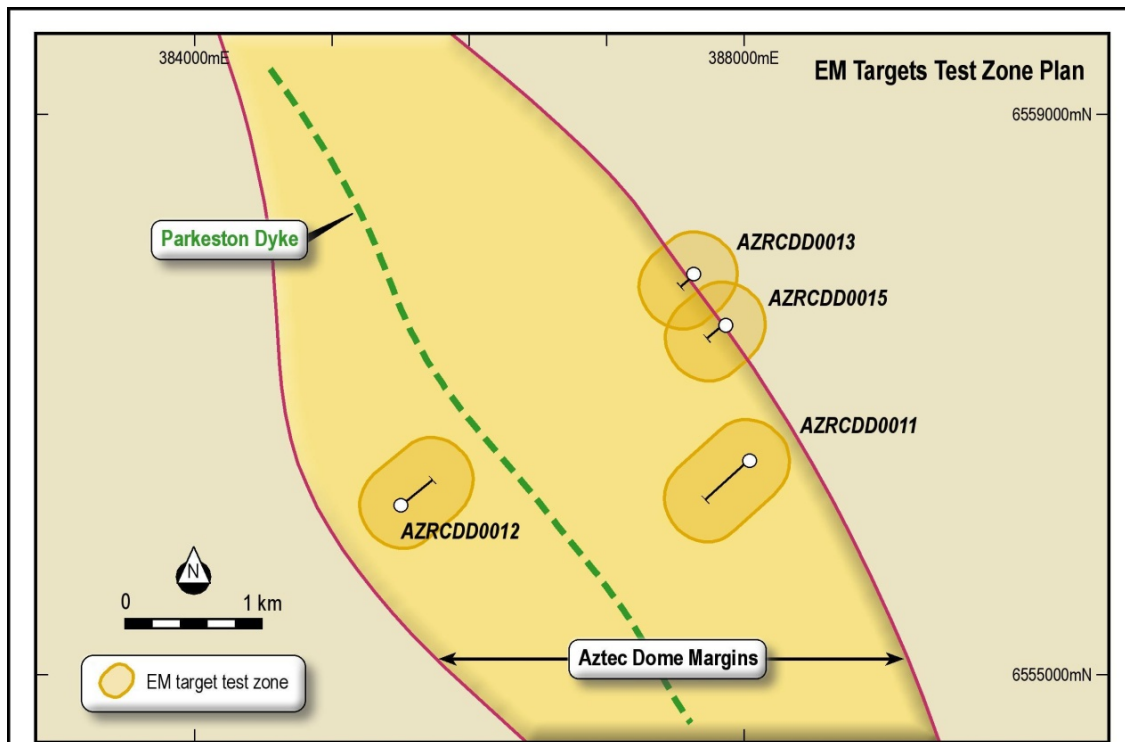


Project Locations Map





Aztec Dome EM Target Zones



TERRAIN MINERALS LTD
AZTEC DOME
EM Targets
Test Zone Plan & Section