



## ASX ANNOUNCEMENT

ASX CODE: TMX, TMXOA

### CAPITAL STRUCTURE

TMX	- Shares on Issue	346.53m
TMXOA	- Options on Issue	18.24m
	- Unlisted Options	73.18m

### DIRECTORS & KEY MANAGEMENT

Dick Sandner	Non-Exec Chairman
Jonathan Lim	Non-Exec Vice Chairman
Alan Coles	Managing Director
Paul Dickson	Non-Exec Director
Ian Hobson	Company Secretary

### PRINCIPAL REGISTERED OFFICE

Terrain Minerals Ltd  
ABN: 45 116 153 514

Suite 4, Level 1  
230 Rokeby Road  
Subiaco 6008  
Western Australia

#### Postal Address

PO Box 1702  
Subiaco WA 6904

### CONTACT

Alan Coles  
Terrain Minerals Ltd  
PH: +61 8 9381 5558  
Fax: +61 8 9381 5551  
WEB: [www.terrainminerals.com.au](http://www.terrainminerals.com.au)  
EMAIL: [terrain@terrainminerals.com.au](mailto:terrain@terrainminerals.com.au)

24 January 2012

## Company Announcement

# SECOND DRILL RIG FOR AZTEC DOME

Terrain Minerals is pleased to announce that a second diamond drill rig from DDH1 has commenced work at Aztec Dome. It has completed pre collaring the holes and started drilling the first hole, AZRCDD013 into the EM anomaly on the Eastern side of the dome. This target is a massive nickel sulphide zone at a depth of 200 metres.

Drilling the second 1km deep stratigraphic diamond hole AZRCDD0012 on the western side of the Aztec Dome is underway. This hole is aimed to show that the rock sequence at Aztec Dome is similar to Kambalda Dome. The Kambalda sequence is basalt overlying ultramafics with a basalt base on which the massive nickel sulphide ore bodies occur.

On behalf of the Board:

Alan Coles  
Managing Director

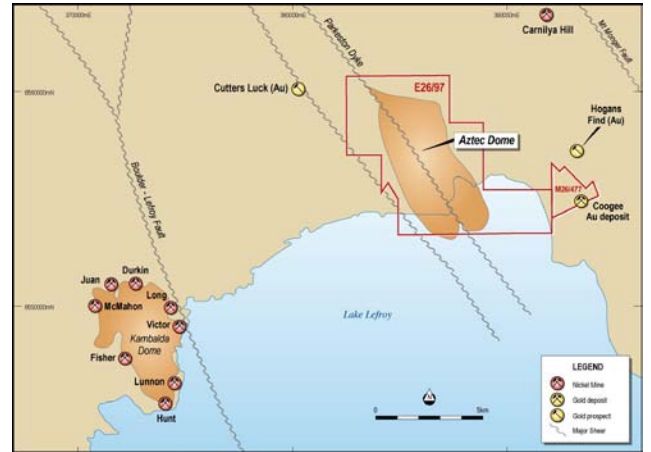
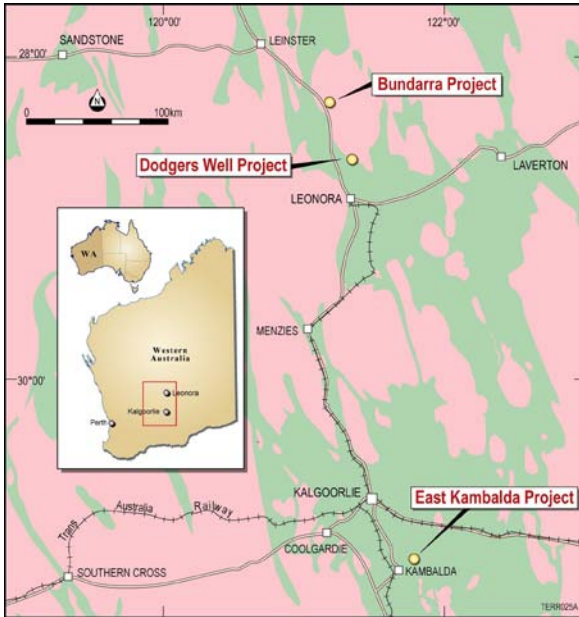
**Terrain Minerals Ltd** ABN: 45 116 153 514

Contact  
Telephone: +61 8 9381 5558  
Facsimile: +61 8 9381 5551  
Email: [terrain@terrainminerals.com.au](mailto:terrain@terrainminerals.com.au)



# Project Locations Map

# Aztec Dome



# EM Anomaly

