



## ASX ANNOUNCEMENT

ASX CODE: TMX, TMXOA

### CAPITAL STRUCTURE

TMX - Shares on Issue 171.23m  
TMXOA - Options on Issue 16.89m  
- Unlisted Options 10.57m

### DIRECTORS & KEY MANAGEMENT

Dick Sandner Non-Exec Chairman  
Jonathan Lim Non-Exec Vice Chairman  
Chris Tomich Managing Director  
Keith Wells Non-Exec Director  
Paul Dickson Non-Exec Director  
Ian Hobson Company Secretary

### PRINCIPAL REGISTERED OFFICE

Terrain Minerals Ltd  
ABN: 45 116 153 514

Suite 4, Level 1  
230 Rokeby Road  
Subiaco 6008  
Western Australia

Postal Address  
PO Box 1702  
Subiaco WA 6904

### CONTACT

Chris Tomich  
Terrain Minerals Ltd  
PH: +61 8 9381 5558  
Fax: +61 8 9381 5551  
WEB: [www.terrainminerals.com.au](http://www.terrainminerals.com.au)  
EMAIL: [terrain@terrainminerals.com.au](mailto:terrain@terrainminerals.com.au)

## ENCOURAGING EM ANOMALIES AT AZTEC DOME NICKEL PROSPECT

Fixed loop electromagnetic (FLEM) survey has detected two strong discrete conductors on the eastern edge of the Aztec Dome, in the East Kambalda Project. They appear to be offset and separated by a fault.

FLEM anomalies dip moderately to the west-southwest and appear to cut across stratigraphy and structure.

The larger FLEM anomaly occurs at approximately 300-400m below surface, and the smaller, but more strongly conductive anomaly, occurs at approximately 140m depth.

FLEM anomalies occur just north of 2009 drill hole AZRC009 which contains sulphides with up to 0.32% nickel in a mixed mafic and ultramafic sequence. The nickel-copper sulphides identified include pentlandite, millerite, and chalcopyrite. Historic hole AZRC001, also containing anomalous nickel and chrome geochemistry, as well as spinifex textured komatiite at the end of hole, is located a few hundred metres further south.

The presence of these strong FLEM anomalies further enhances the prospectivity of the eastern Aztec Dome, where nickel sulphides are believed to be remobilised from a deeper source in to the overlying mafic cover sequence.

These new geophysical targets require drill testing, which is currently being planned. The Aztec Dome also contains other geological and geophysical anomalies which require deep drill testing.

The Aztec Dome is believed to be an analogue of the Kambalda Dome, located 10-20km to the southwest, which is the host to numerous komatiitic nickel sulphide ore bodies.



On behalf of the Board:

*Chris Tomich*

Chris Tomich,  
Managing Director

**Terrain Minerals Ltd** ABN: 45 116 153 514

Contact

Telephone: +61 8 9381 5558

Facsimile: +61 8 9381 5551

Email: [terrain@terrainminerals.com.au](mailto:terrain@terrainminerals.com.au)

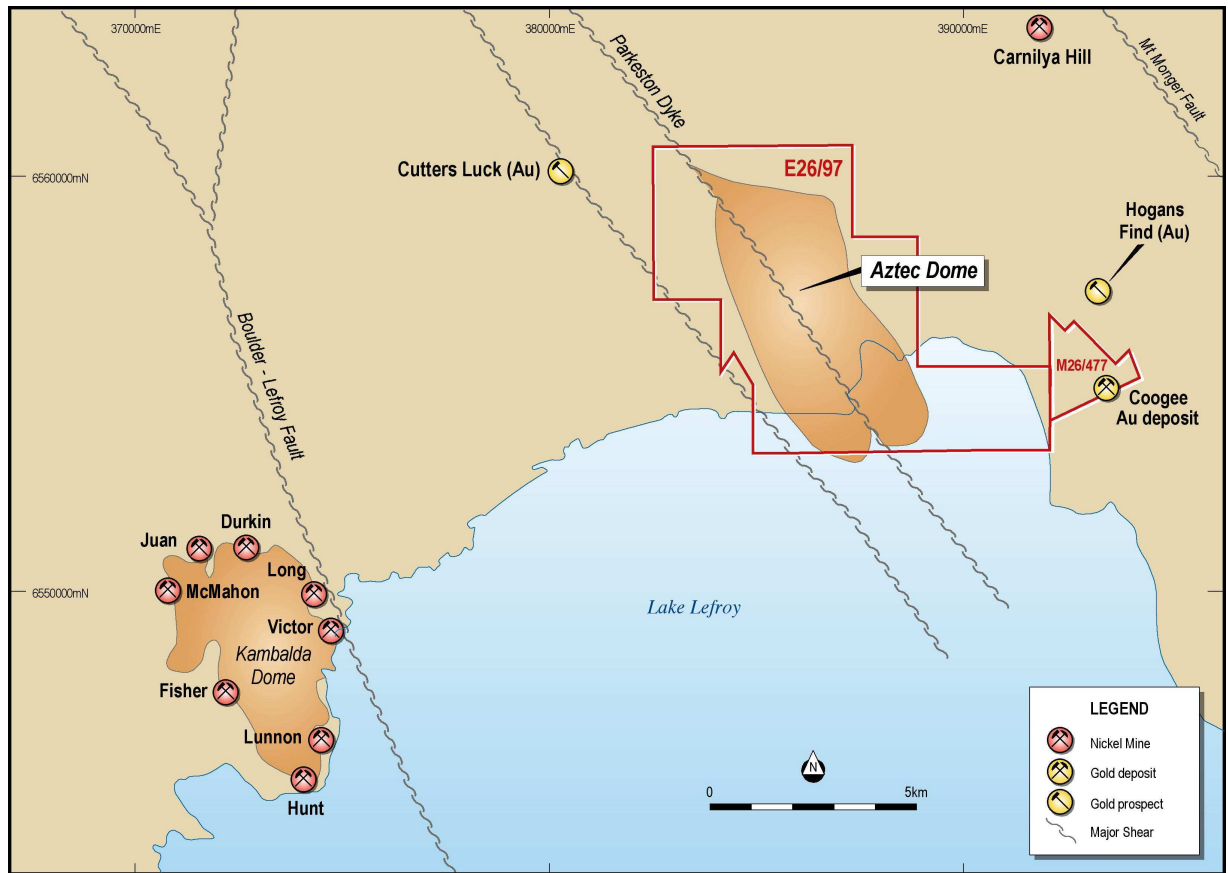
Further information regarding the company, Terrain's projects and exploration programs can be found on the Company's website: [www.terrainminerals.com.au](http://www.terrainminerals.com.au)

### **Competent Persons Statement**

*The information in this report that relates to Exploration Results is based on information compiled by Mr Chris Tomich, who is a full time employee of Terrain Minerals Ltd. Mr Tomich is a member of the Australian Institute of Geoscientists (MAIG) and has sufficient experience which is relevant to the style of mineralisation and type of deposit under consideration and to the activity which he is undertaking to qualify as a Competent Person as defined in the 2004 Edition of the 'Australasian Code for Reporting of Exploration Results, Mineral Resources and Ore Reserves' Mr Tomich consents to the inclusion in the report of the matters based on information in the form and context in which it appears.*



Figure 1: East Kambalda Project Location Plan



**Figure 2: Fixed Loop EM Anomaly Plan**

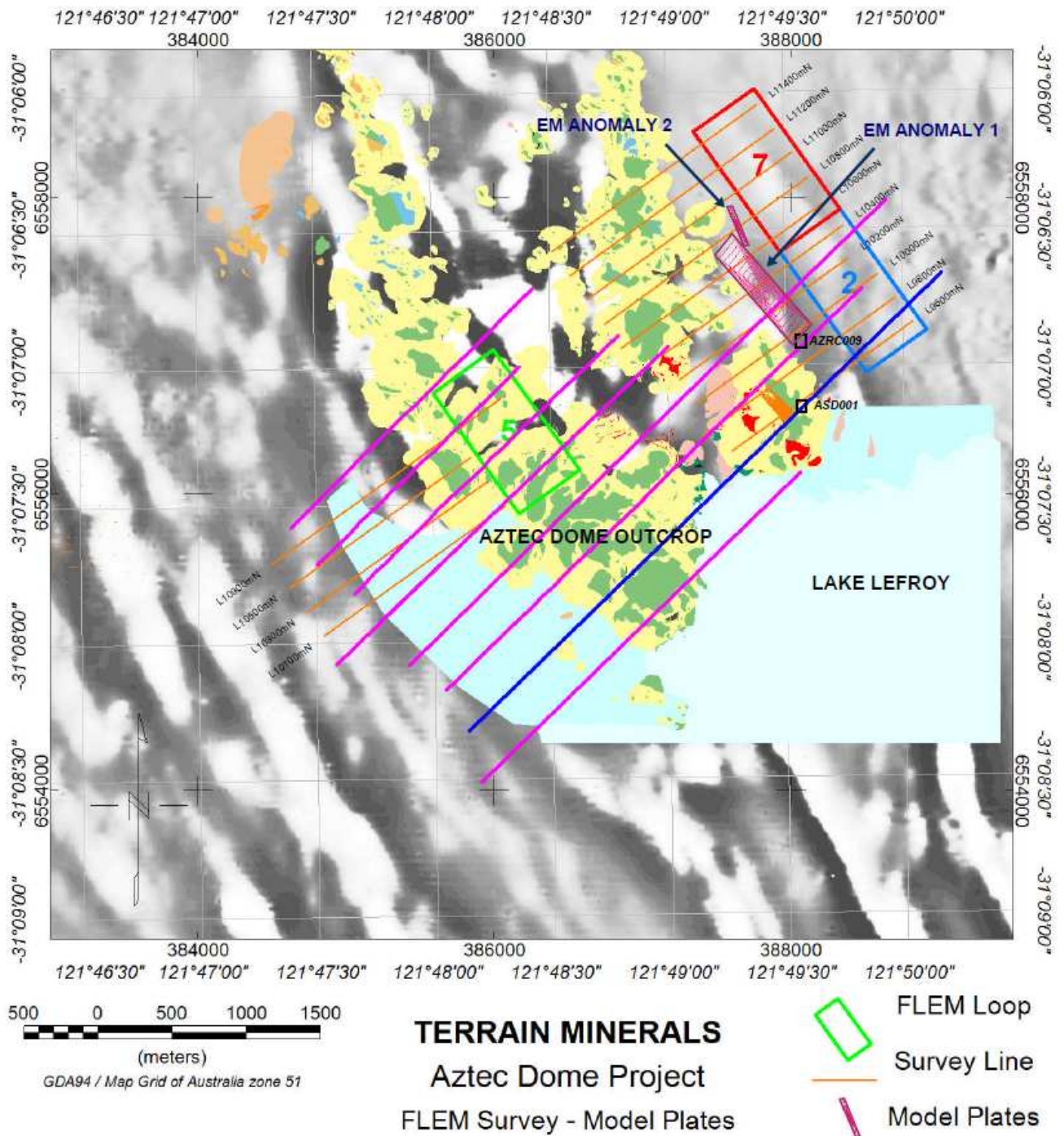


Figure 3: EM Anomaly 1 & Anomaly 2

