



## ASX ANNOUNCEMENT

ASX CODE: TMX, TMXO

### CAPITAL STRUCTURE

TMX - Shares on Issue 137,512,000  
TMXO - Options on Issue 51,624,132M

### DIRECTORS & KEY MANAGEMENT

Dick Sandner	Non-Exec Chairman
Jonathan Lim	Non-Exec Vice Chairman
Keith Wells	Managing Director
Paul Dickson	Non-Exec Director
Ian Hobson	Company Secretary

### PRINCIPAL REGISTERED OFFICE

Terrain Minerals Ltd  
Suite 4, Level 1  
230 Rokeby Road  
Subiaco WA 6008

Postal Address  
PO Box 1702  
Subiaco WA 6904

### CONTACT

Keith Wells  
Terrain Minerals Ltd  
ABN: 45 116 153 514  
PH: +61 8 9381 5558  
WEB: [www.terrainminerals.com.au](http://www.terrainminerals.com.au)  
EMAIL: [terrain@terrainminerals.com.au](mailto:terrain@terrainminerals.com.au)

## AZTEC DOME, KAMBALDA DRILLING INTERSECTS ANOMALOUS NICKEL VALUES AND CONFIRMS PRESENCE OF ULTRAMAFIC ROCKS: DEEPER DIAMOND DRILLING PLANNED

- A RC drilling program totalling 2,691m, in nine holes was completed to test four IP anomalies at the Aztec Dome nickel prospect (Figure 2).
- Drill hole AZRC 009 intersected similar mineralisation to historic drill hole ASD 001, drilled 300m further south. A 143m wide zone (81m – 224m) of anomalous nickel values (up to 0.25%), associated with disseminated sulphides and high chrome (up to 0.35%) and MgO (up to 22%) values typical of ultramafic rocks.
- IP and EM surveys over the same area have detected a deeper conductor (which could relate to a massive sulphide zone), which will be one of the targets for a deeper diamond drilling program planned for mid 2010.
- Disseminated sulphides (up to 20%) were detected associated with all four IP anomalies. At Anomaly C the sulphides are associated with high magnesian basalts and some narrow bands of ultramafic, which appear to be above the main ultramafic horizon(s).
- The board considers the drilling results, particularly from AZRC 009, to be very encouraging and down hole geophysical logging of some selected holes, to try and define other conductors, will be undertaken ahead of a deeper diamond drilling program proposed for mid 2010.

On behalf of the board:



Keith Wells  
Managing Director

### **About Terrain Minerals Ltd (ASX: TMX)**

TMX is a Perth based exploration company with a number of gold and nickel projects in the Eastern Goldfields of Western Australia, including the advanced gold project at Bundarra.

#### Bundarra (60 kms north of Leonora)

TMX has outlined JORC compliant resources of 320,000 oz of gold in a closely related cluster of deposits including: Wonder North, Celtic, Great Western, Bluebush and Black Cat (Table 1). All the deposits remain open down dip and down plunge. Mining studies are currently in progress, including metallurgical test work, pit optimisations, pit designs and mine scheduling. These mining studies are anticipated to be completed in the fourth quarter 2009 and mining operations to commence in 2010.

On the adjoining Black Cat JV area (TMX increasing equity from 60% to 75%), a number of strong geochemical anomalies coincident with geological features, similar to the known deposits remain to be drill tested.

#### Kambalda (15 kms east of Kambalda)

Aztec Dome – subject of this announcement.

Coogee gold deposit (277,500t @ 3.9 g/t gold (35,000 oz)) (Table 1)

A pit optimisation and pit design have been completed and indicate that the resource would support a profitable mining operation. Mining development is currently focussed on the Bundarra project and the Coogee deposit is being offered for sale.

#### Dodgers Well (30 kms north east of Leonora)

TMX recently exercised an option to purchase this project for \$50,000 worth of Terrain shares.. Preliminary work has identified high grade (up to 130g/t gold) quartz reef deposits. It is anticipated that the option to purchase will be exercised before the end of 2009, ahead of drilling programs in 2010.

#### Corporate

Shares on Issue (TMX) - 137.5m: Options on Issue (TMXO) - 51.6m

Directors: Dick Sandner – Non-Exec Chairman

Jonathan Lim – Non-Exec Vice-Chairman

Keith Wells – Managing Director

Paul Dickson – Non-Exec Director

Ian Hobson – Company Secretary

Further information regarding the company, Terrain's projects and exploration programs can be found on the Company's website: [www.terrainminerals.com.au](http://www.terrainminerals.com.au)

**Table 1: Bundarra Resources (at 1 g/t gold cut off)**

Deposit	Resources	Measured	Indicated	Inferred	Totals
Wonder North	Tonnes	354,000	872,000	1,314,000	2,540,000
	Grade g/t	2.3	2.4	1.9	2.1
	Ounces	26,000	66,500	80,200	172,600
Bluebush	Tonnes			726,000	726,000
	Grade			1.7	1.7
	Ounces			38,900	38,900
Black Cat	Tonnes			134,000	134,000
	Grade			2.5	2.5
	Ounces			10,600	10,600
Great Western	Tonnes	58,000	284,000	131,000	473,000
	Grade	3.0	2.8	2.3	2.7
	Ounces	5,600	25,800	9,500	40,900
Totals	Tonnes	412,000	1,156,000	2,305,000	3,873,00
	Grade	2.4	2.5	1.9	2.1
	Ounces	31,600	92,300	139,200	263,100
Celtic*	Tonnes	683,900	199,400	204,400	1,087,700
	Grade	1.8	1.5	1.5	1.7
	Ounces	39,300	9,300	9,500	58,100
TOTALS	Tonnes	1,095,900	1,355,400	2,509,400	4,960,700
	Grade	2.0	2.4	1.9	2.0
	Ounces	70,900	101,600	148,700	321,200

\* - Celtic Resource previously published in Terrain Prospectus dated March 2006

*The Mineral Resource estimates for the Wonder North, Bluebush, Great Western and Black Cat deposits were completed by Mr. Shane Fieldgate of CSA Global Pty Ltd, who is a Member of the Australian Institute of Geoscientists (MAIG) and is a Competent Person as defined by the Australasian Code for the Reporting of Exploration Results Mineral Resources and Ore Reserves (JORC Code) 2004 Edition and who consents to the inclusion in this report of the matters based on his information in the form and context in which it appears.*

**Coogee Resource (1g/t gold cut-off)**

Deposit	Category	Measured	Indicated	Inferred	Totals
Coogee	Tonnes		137,800	139,700	277,500
	Grade (g/t)		4.12	3.70	3.91
	oz		18,250	16,620	34,870

*The Mineral Resource estimate for the Coogee deposit was reviewed by Mr. Malcolm Castle, who is a Member of the Australian Institute of Mining & Metallurgy (AUSIMM) and is a Competent Person as defined by the Australasian Code for the Reporting of Exploration Results Mineral Resources and Ore Reserves (JORC Code) 2004 Edition and who consents to the inclusion in this report of the matters based on his information in the form and context in which it appears.*

**Table 1: Drill Hole Information**

Hole Number	Collar Co-ordinates (MGA)		Bearing (mag)	Dip	Length (m)
	Easting (m)	Northing (m)			
AZRC 001	387254	6555801	225	-60	300
AZRC 002	386960	6555934	225	-60	300
AZRC 003	386818	6556222	225	-60	300
AZRC 004	385373	6555651	45	-60	300
AZRC 005	385818	6556097	45	-60	300
AZRC 006	385370	6556088	225	-60	300
AZRC 007	385525	6556223	45	-60	291
AZRC 008	385363	6556523	45	-60	300
AZRC 009	388039	6556978	225	-60	300

Figure 1: East Kambalda Project

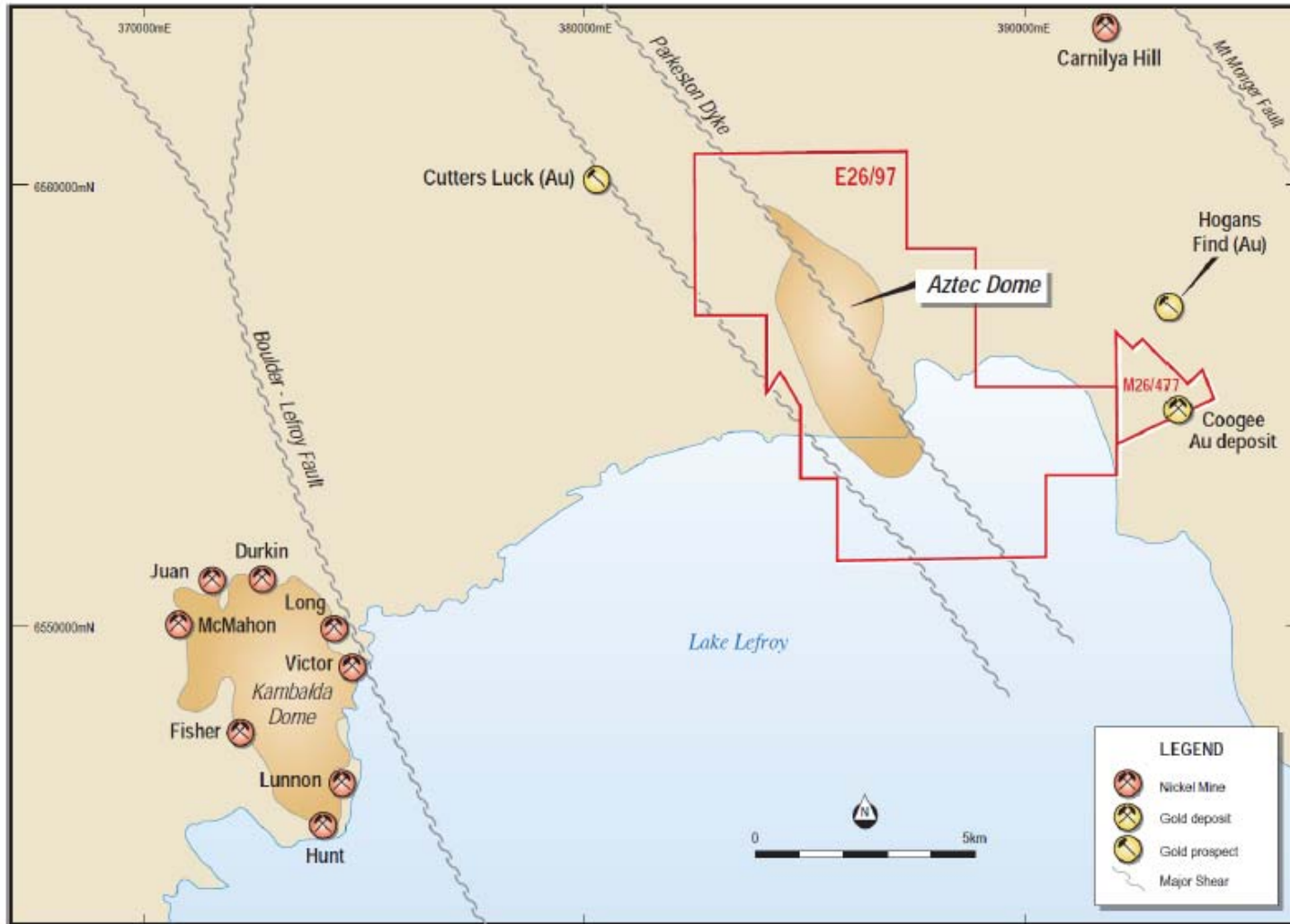


Figure 2: Aztec Dome – Geophysical Anomalies & Drill Hole Locations

