



ABN: 45 116 153 514

# Terrain Minerals Presentation November 2010





## **FORWARD LOOKING STATEMENTS**

*This presentation has been prepared by Terrain Minerals Ltd (“Terrain”) as a summary of the Company, its mineral assets and its plans to explore its tenements and for general information purposes only. This presentation contains material that can be construed as forward looking statements.*

*This presentation is not and should not be considered as an offer or invitation to subscribe for or purchase any securities in Terrain, or as an inducement to make an offer or invitation with respect to those securities. No agreement to subscribe for securities in Terrain will be entered into on the basis of this presentation.*

*Terrain disclaims any intent or obligation to update any material which constitutes forward looking statements, whether as a result of new information, future events, results, or otherwise. All forward looking statements should be treated with caution. Potential investors are cautioned that forward looking statements are not guarantees of future performance and, therefore, should not put undue reliance on such statements.*

*Due care and attention has been taken into preparation of this presentation. To the fullest extent permitted by law, no liability, however arising, will be accepted by Terrain or its directors, officers or advisers, for the fairness, accuracy or completeness of the information contained in this presentation. This presentation contains certain forward-looking statements which have not been based solely on historical facts but, rather, on Terrain’s current expectations about future events and on a number of assumptions which are subject to significant uncertainties and contingencies many of which are outside the control of Terrain and its directors, officers and advisers.*

## **COMPETENT PERSONS STATEMENT**

*The information in this report that relates to Exploration Results is based on information compiled by Mr Chris Tomich, who is a full time employee of Terrain Minerals Ltd. Mr Tomich is a member of the Australian Institute of Geoscientists (MAIG) and has sufficient experience which is relevant to the style of mineralisation and type of deposit under consideration and to the activity which he is undertaking to qualify as a Competent Person as defined in the 2004 Edition of the ‘Australasian Code for Reporting of Exploration Results, Mineral Resources and Ore Reserves’ Mr Tomich consents to the inclusion in the report of the matters based on information in the form and context in which it appears.*

*The Mineral Resource estimates (at 1g/t gold cut-off) for the Wonder North, Bluebush, Great Western and Black Cat deposits at Bundarra were completed by consultant Mr. Shane Fieldgate of CSA Global Pty Ltd, who is a Member of the Australian Institute of Geoscientists (MAIG) and is a Competent Person as defined by the Australasian Code for the Reporting of Exploration Result Mineral Resources and Ore Reserves (JORC Code) 2004 Edition and who consents to the inclusion in this report of the matters based on his information in the form and context in which it appears.*

*The Mineral Resource estimate (at +3g/t gold cut-off) for the Wonder North deposit at Bundarra was completed by consultant Mr. Steve Le Brun of LBC Resources Pty Ltd, who is a Member of the Australasian Institute of Mining and Metallurgy (MAusIMM) and is a Competent Person as defined by the Australasian Code for the Reporting of Exploration Result Mineral Resources and Ore Reserves (JORC Code) 2004 Edition and who consents to the inclusion in this report of the matters based on his information in the form and context in which it appears.*

*The Mineral Resource estimate for the Coogee deposit was reviewed by consultant Mr. Malcolm Castle, who is a Member of the Australian Institute of Mining & Metallurgy (MAusIMM) and is a Competent Person as defined by the Australasian Code for the Reporting of Exploration Results Mineral Resources and Ore Reserves (JORC Code) 2004 Edition and who consents to the inclusion in this report of the matters based on his information in the form and context in which it appears.*

## CAPITAL STRUCTURE

**Issued Shares (TMX):** 171.2 m

### **Issued Options**

**Listed (TMXOA):** 16.9 m

**Unlisted:** 10.6 m

**Share Price (08/11/10):** 2.7c

**Market Cap:** \$4.6 m

**Cash 30/09/10:** \$0.48m

**\$1.5m Con/Note secured.**

## BOARD OF DIRECTORS

### **Non executive**

**Chairman:** Dick Sandner

**Vice Chair:** Jonathan Lim

**Keith Wells**

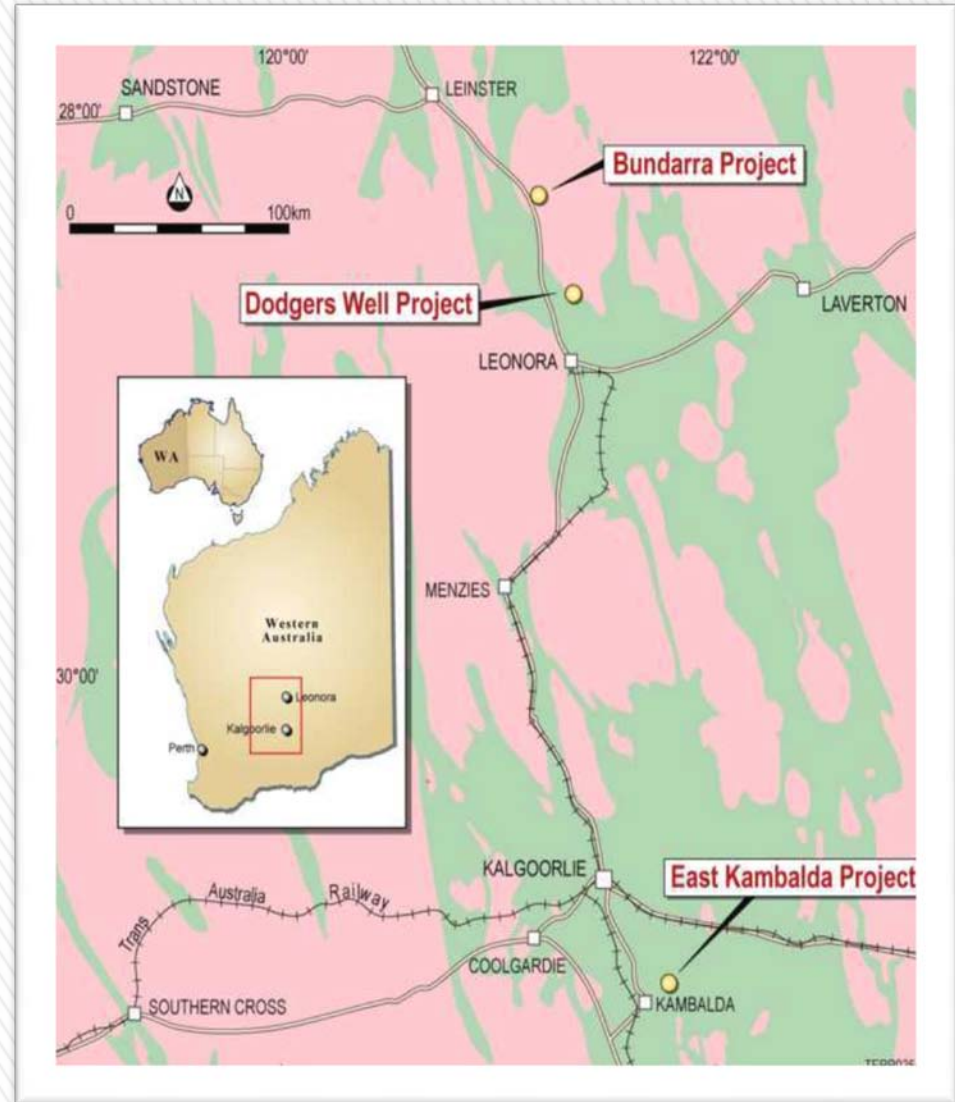
**Paul Dickson**

### **Executive**

**MD:** Chris Tomich

## MAJOR SHAREHOLDERS

**Top 20 Shareholders** 69.26%





# Mining Update - Celtic

- » Mining preparation – dewatering & grade control drilling.
- » \$1.5m convertible note completed.
- » Toll treatment agreement completed - Gold Fields Agnew Gold Mine
- » Anticipated recovery of 6,000oz of gold.
- » Cash surplus of \$2-3m expected.





# Celtic Pit



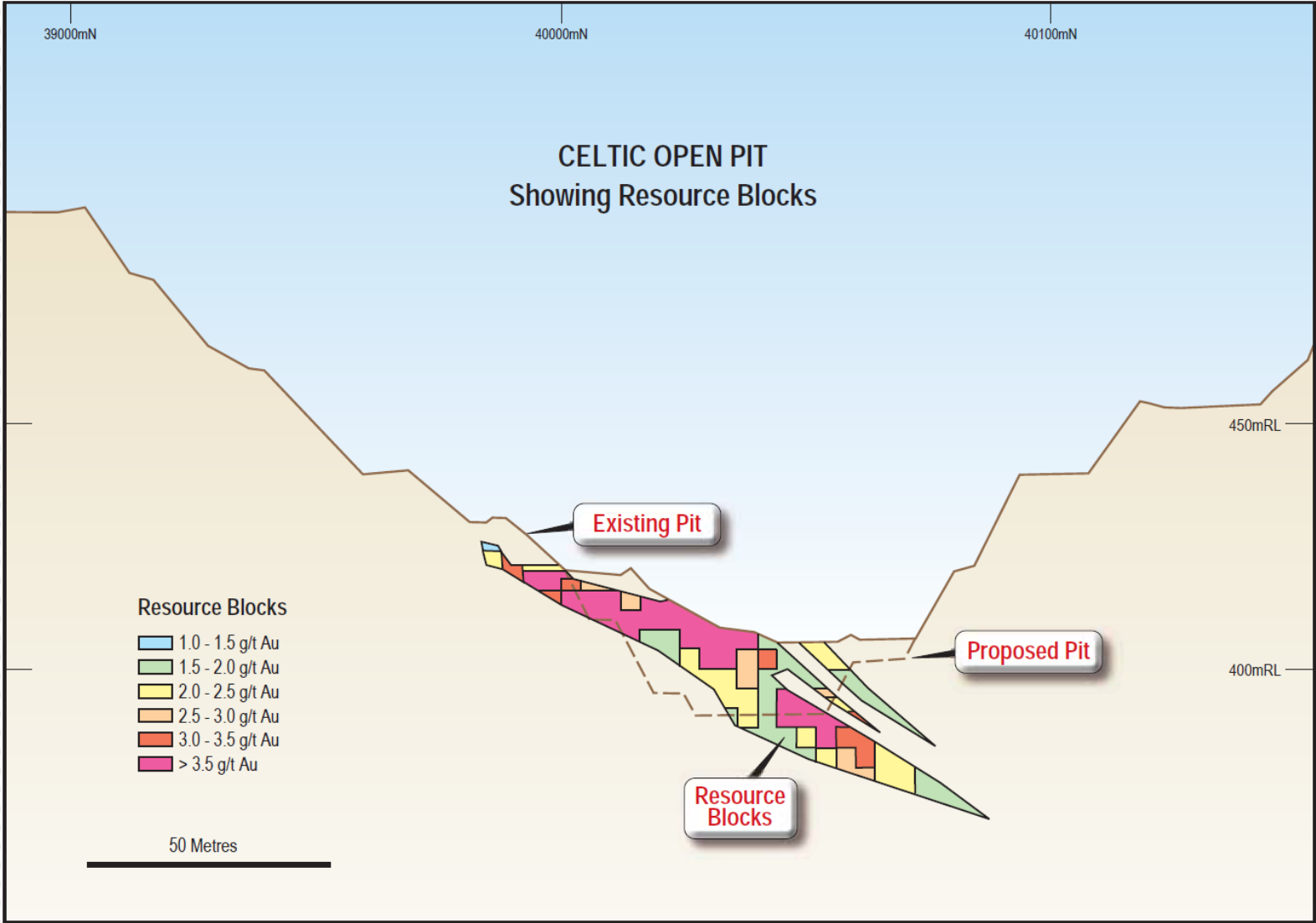


# Celtic Pit





# Celtic Deposit Cross Section: Proposed Pit Extension





# Great Western - Update

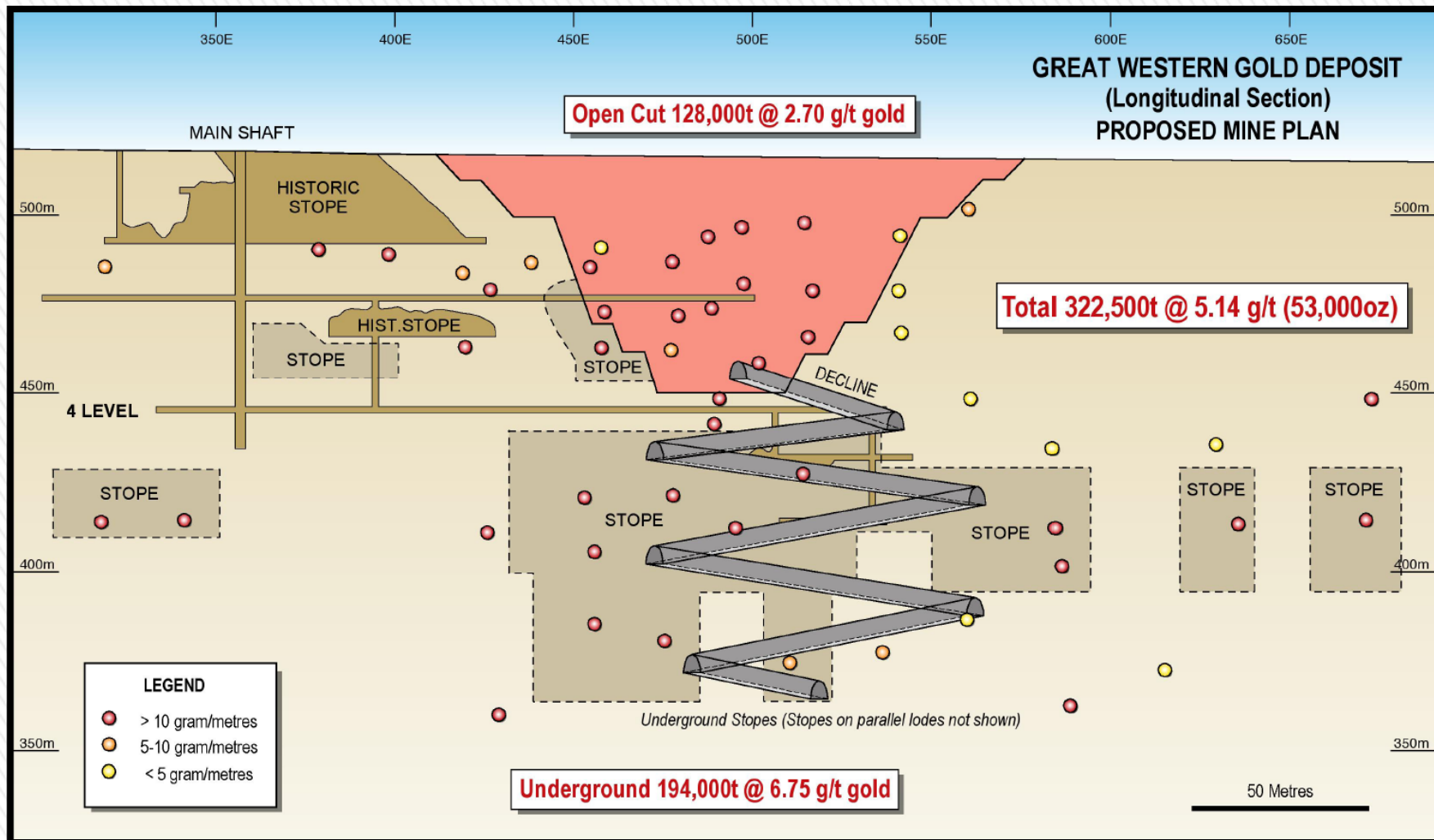
- » Mine Scoping Studies Completed:
- » Great Western Open Pit & Underground
  
- » Potential Mine Extensions:
- » Great Western – underground, down plunge





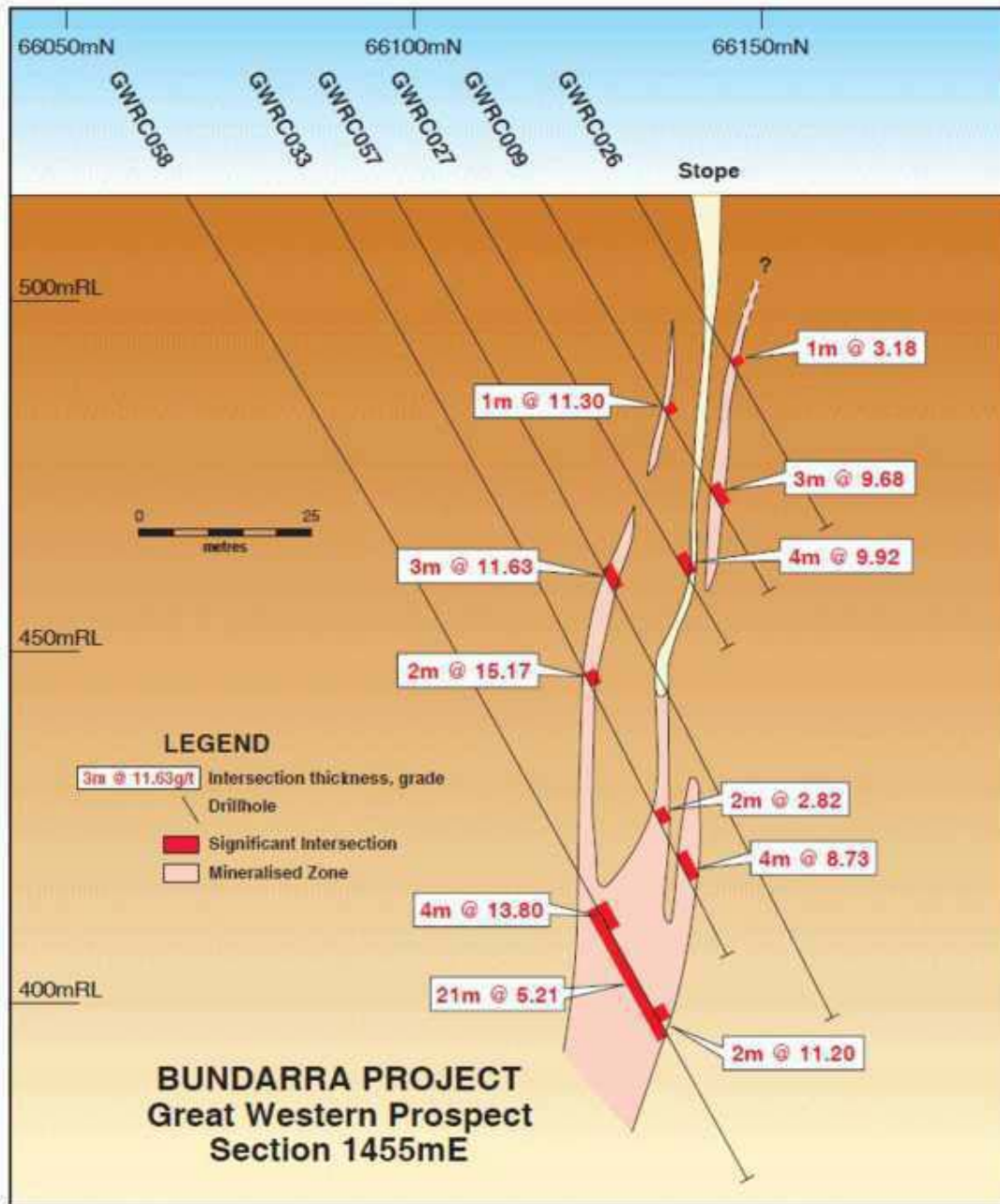


# Great Western Deposit Proposed Mine Plan





# Great Western Deposit





# Great Western : What's next?

- » Geotechnical Drilling
- » Resource Expansion Drilling
- » Permitting to be obtained – drilling/mining





# Wonder Nth - Update

- » Mine Scoping Studies Completed:
- » Wonder North Open Pit & Underground
  
- » Potential Mine Extensions:
- » Wonder North – underground, down plunge



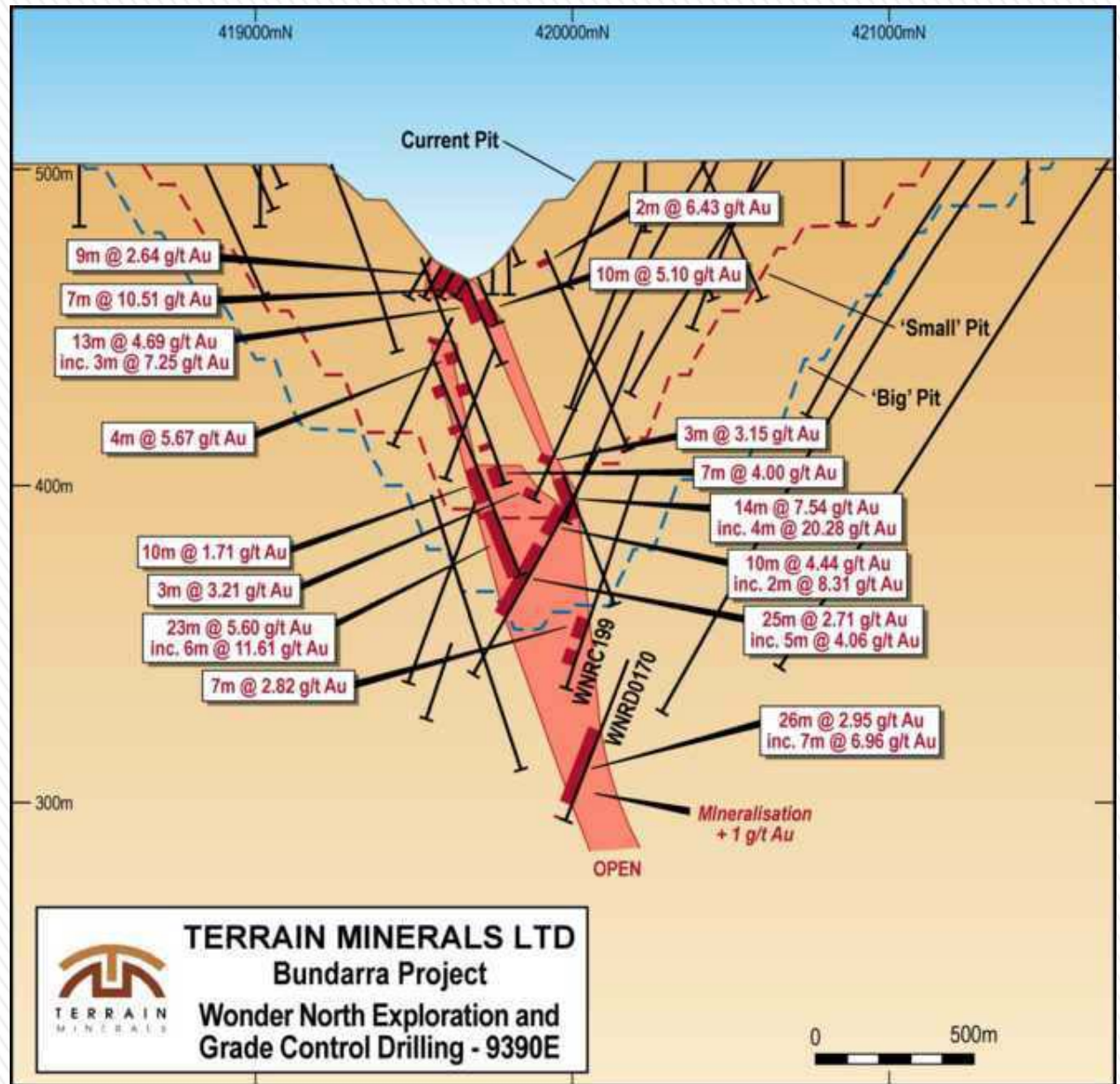


# Wonder North Mining Scoping Studies

- » “Small Pit” mining inventory = 449,000t at 2.56g/t gold  
36,955 oz (1g/t gold lower cut-off)
- » “Big Pit” mining inventory = 697,200t at 2.45g/t gold  
54,918oz (1g/t gold lower cut-off)
- » High grade (+3g/t gold) Indicated and Inferred Resource  
below current pit = 621,600t @ 4.8g/t au – 96,000 oz
- » Based on 2009 input costs and gold price of A\$1,200/oz

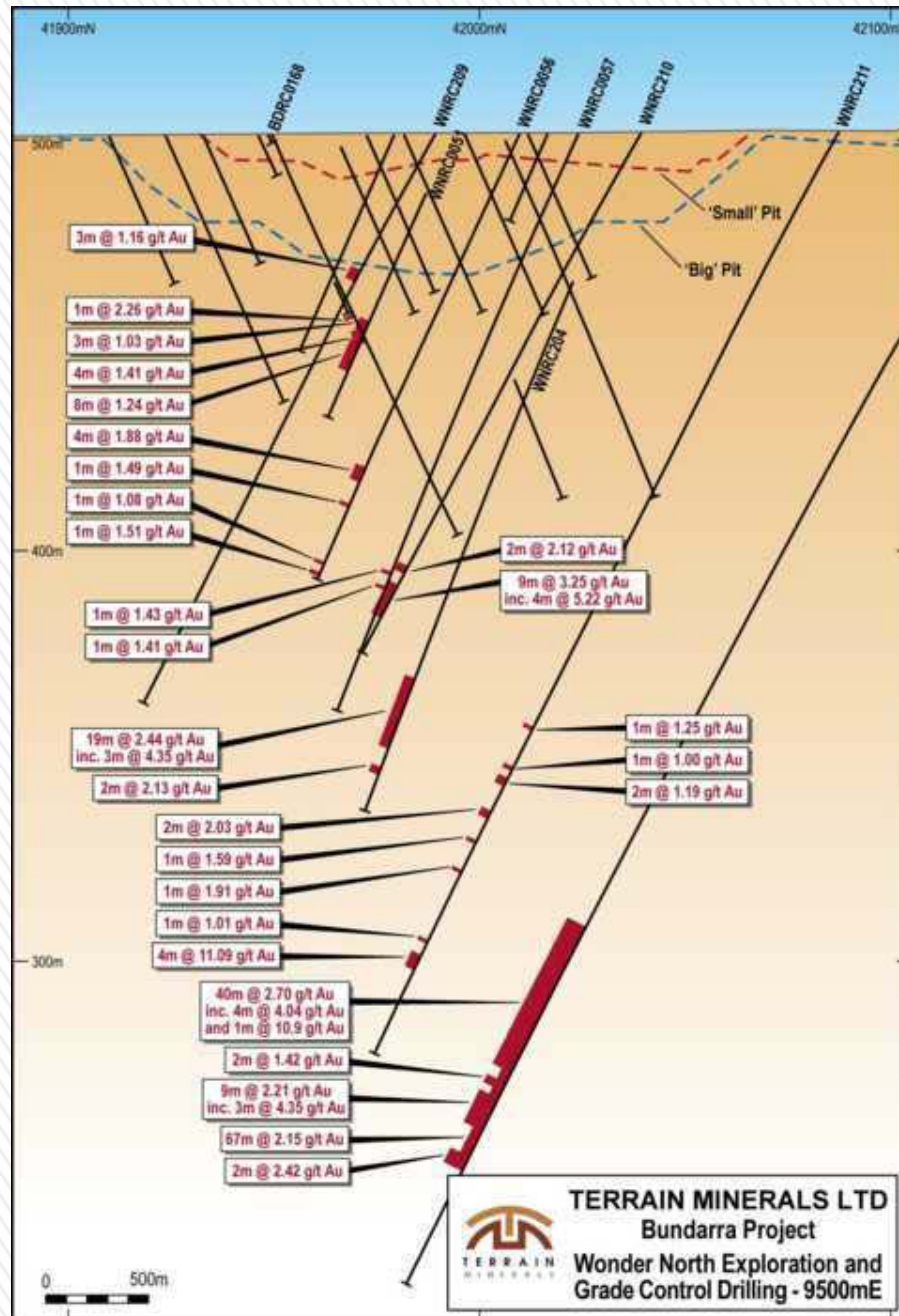


# Wonder North Deposit



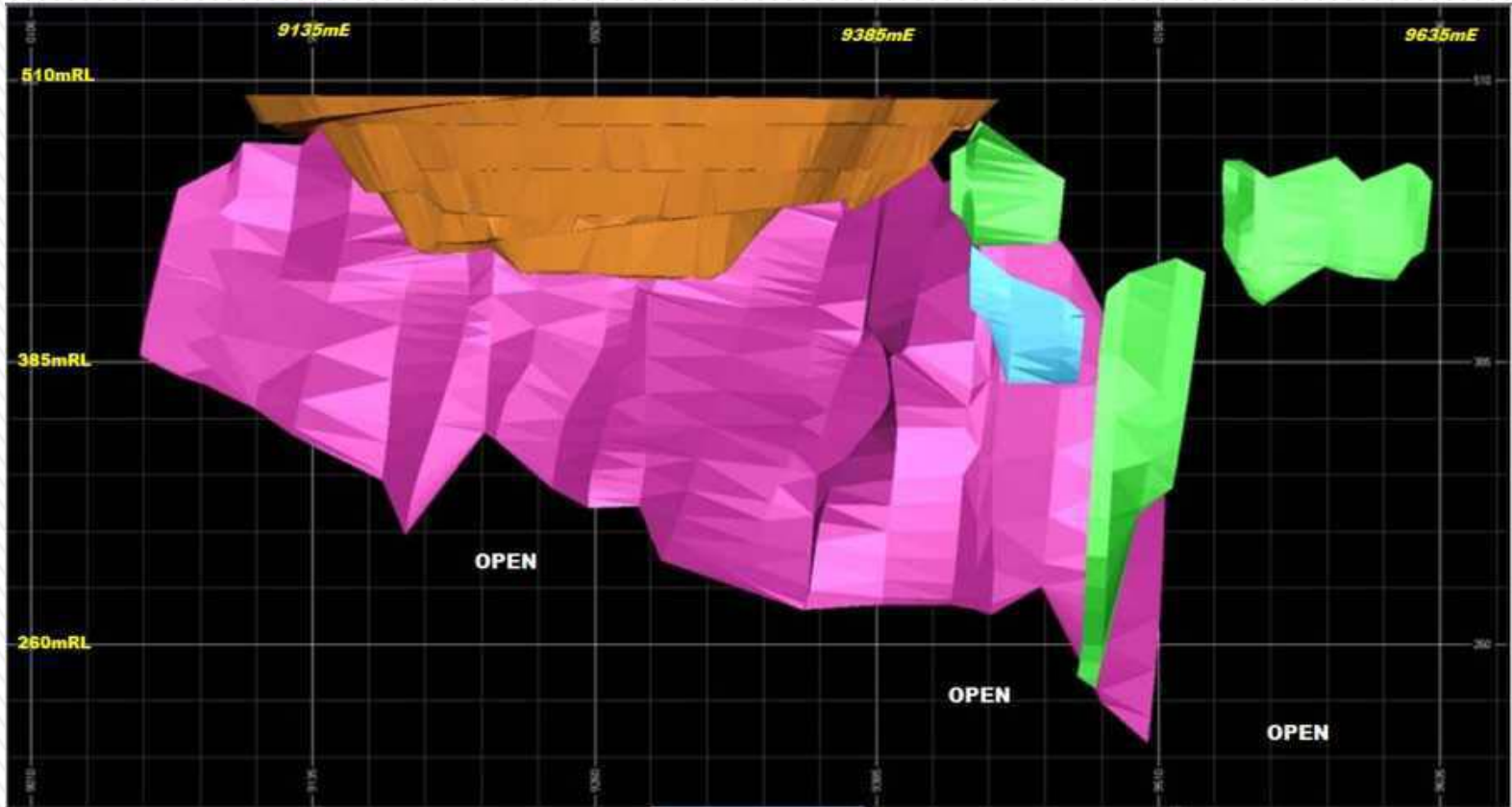


# Wonder North Deposit





# Wonder North High Grade Underground Resource



JORC Resource 621,600t @ 4.8 g/t Au (96,080oz)







# Wonder Nth – What's Next?

- » Geotechnical Drilling
- » Resource Expansion Drilling
- » Permitting to be obtained – drilling/mining





# Bundarra: Other Targets

## Black Cat Joint Venture with St. Barbara:

- » TMX has earned a 60% interest,
- » by spending \$750,000 TMX will increase its interest to 75%

## Craig/Katalina

- » Exciting topographical high 1Km long X 160m wide with strong geochemical signature.
- » Previous prospector drill intercepts include:
  - » Craig: 6m @ 37.83g/t au from 15m,  
4m @ 2.04g/t au from 11m,  
6m @ 2.34g/t au from 6m
  - » Katalina: 6m @ 3.83g/t au from 12m,  
7m @ 2.86g/t au from 0m,  
9m @ 2.31g/t au from 10m





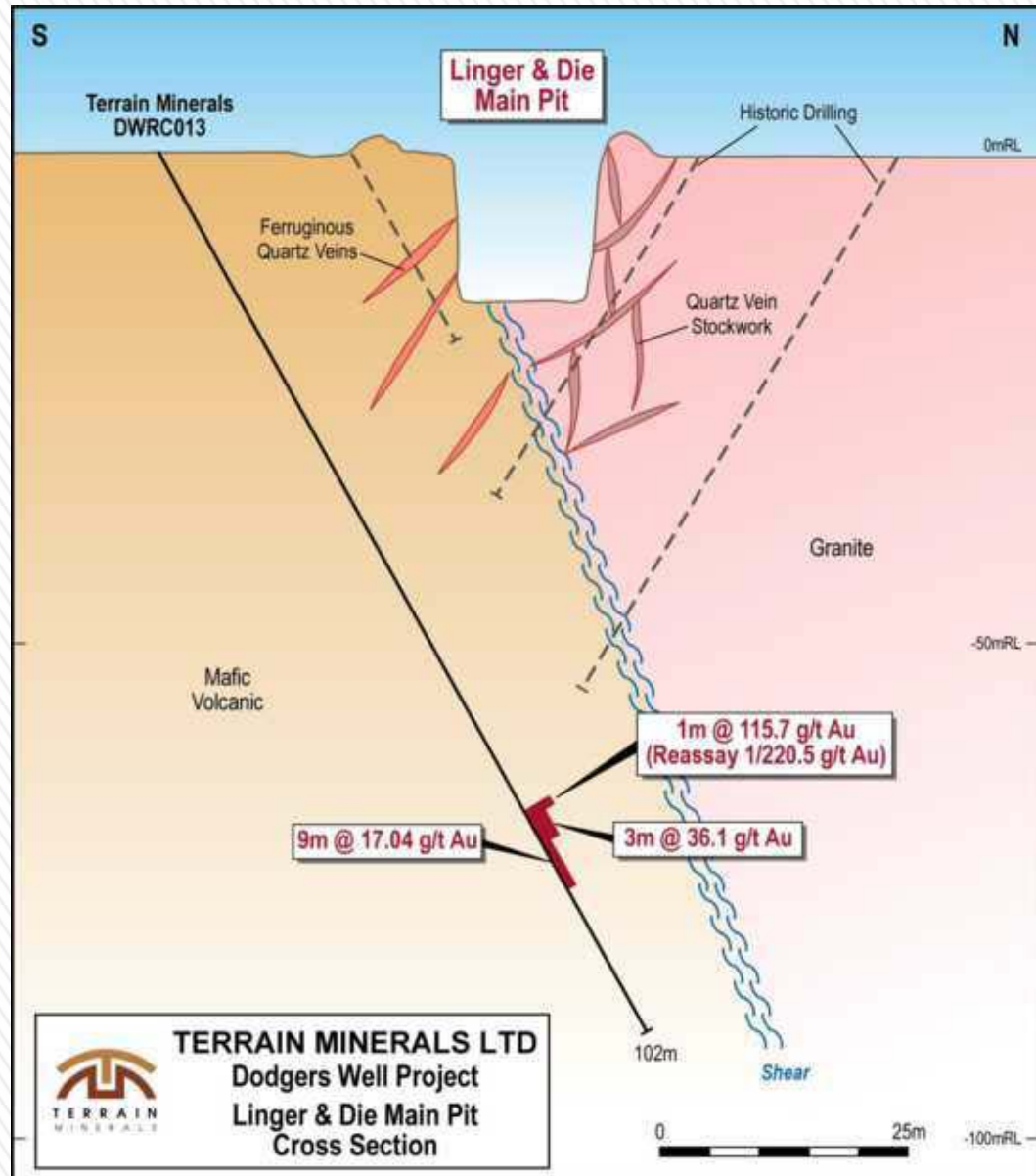
# Dodgers Well Project

- » First pass shallow RC drilling tested high grade gold targets.
- » DWRC013            9m @ 17.04 g/t au from 76m  
                          including 4m @ 36.10 g/t au from 76m,  
                          including 1m @ 115.7 g/t au from 76m  
                          Re assay of 1m @ 220.5 g/t au.
- » DWRC014            6m @ 5.65 g/t au  
                          including 3m @ 9.67 g/t au from surface
- » Presence of coarse gold.
- » **WHAT'S NEXT?**
- » More drilling is required to determine extent of mineralisation.



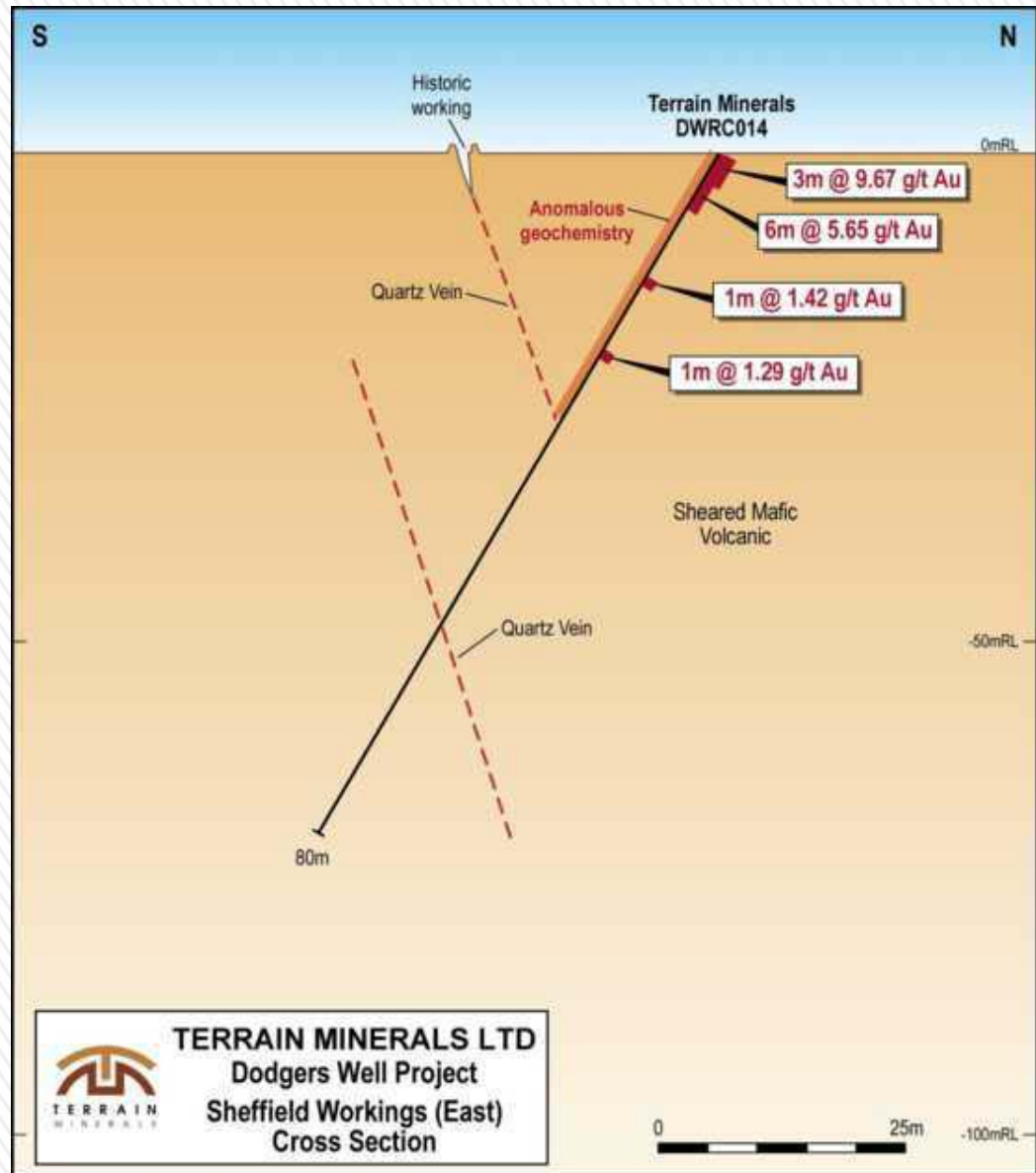


# DODGERS WELL PROJECT





# DODGERS WELL PROJECT

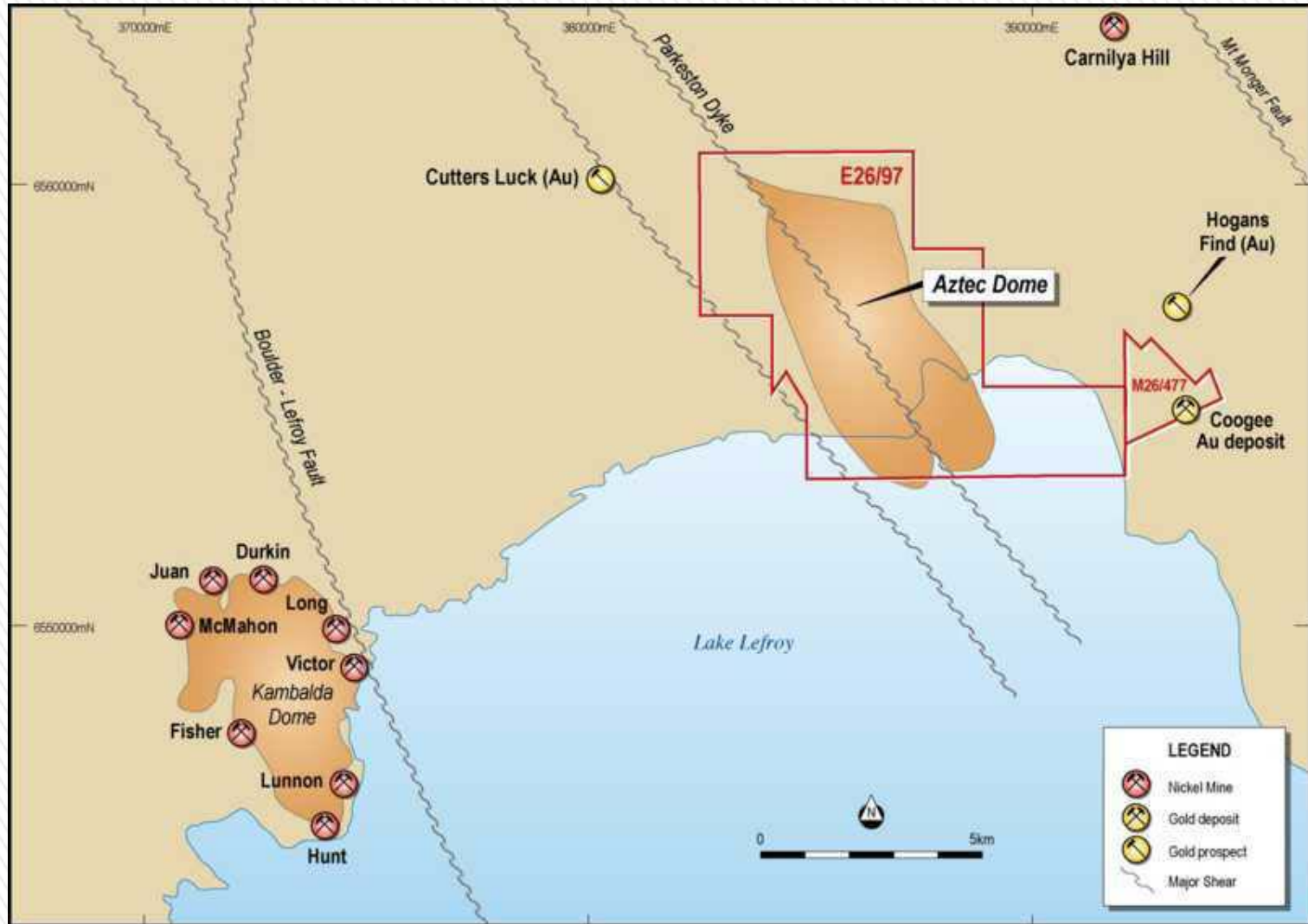




# Project Update – East Kambalda



# East Kambalda Location Map





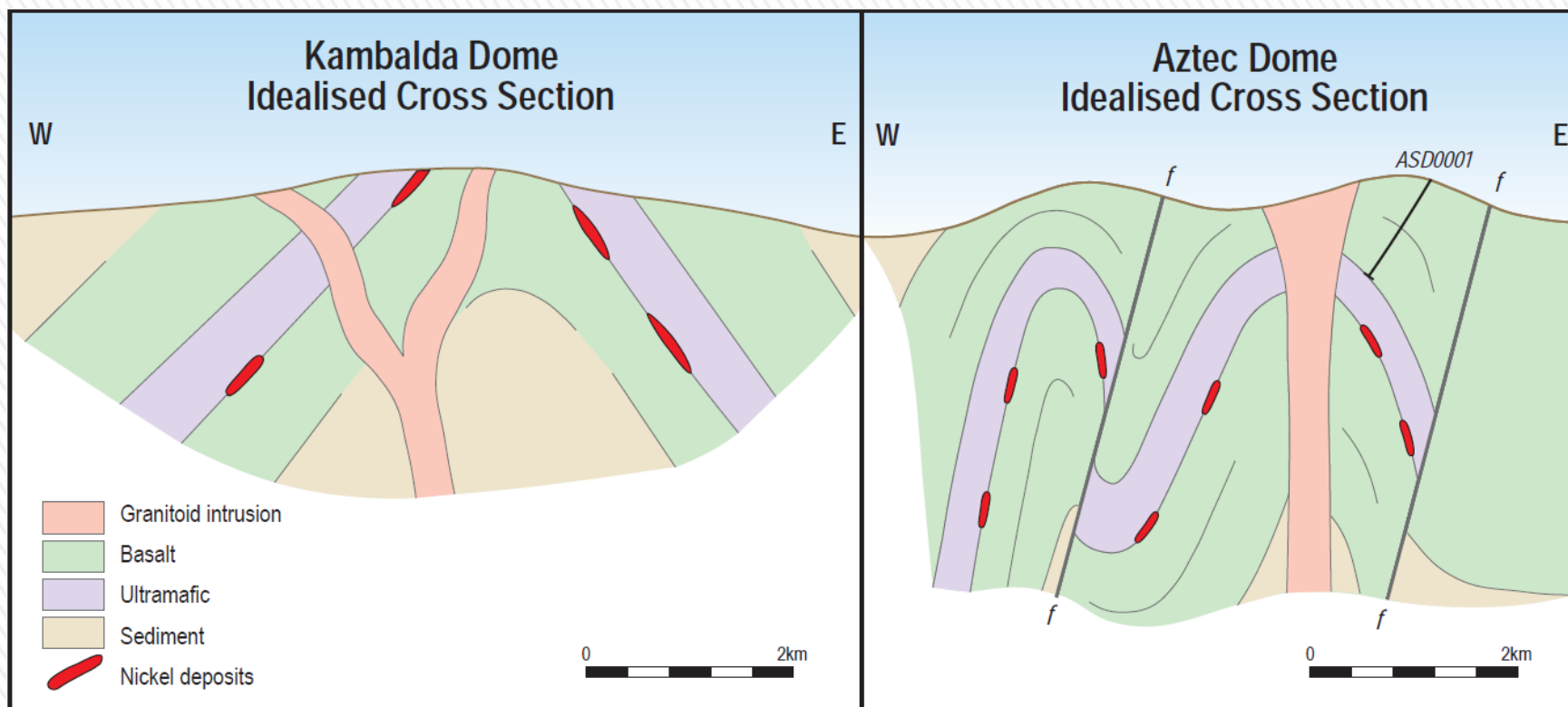
# Kambalda v Aztec Dome

- » **Similar Structure:** a dome intersected and adjacent to major faults
- » **Similar Geology:** basalts, minor shales, ultramafics, syenite intrusions
- » **Similar Trace Element Geochemistry**
- » **Similar magnetic and gravity signatures**
- » **Presence of nickel sulphides**



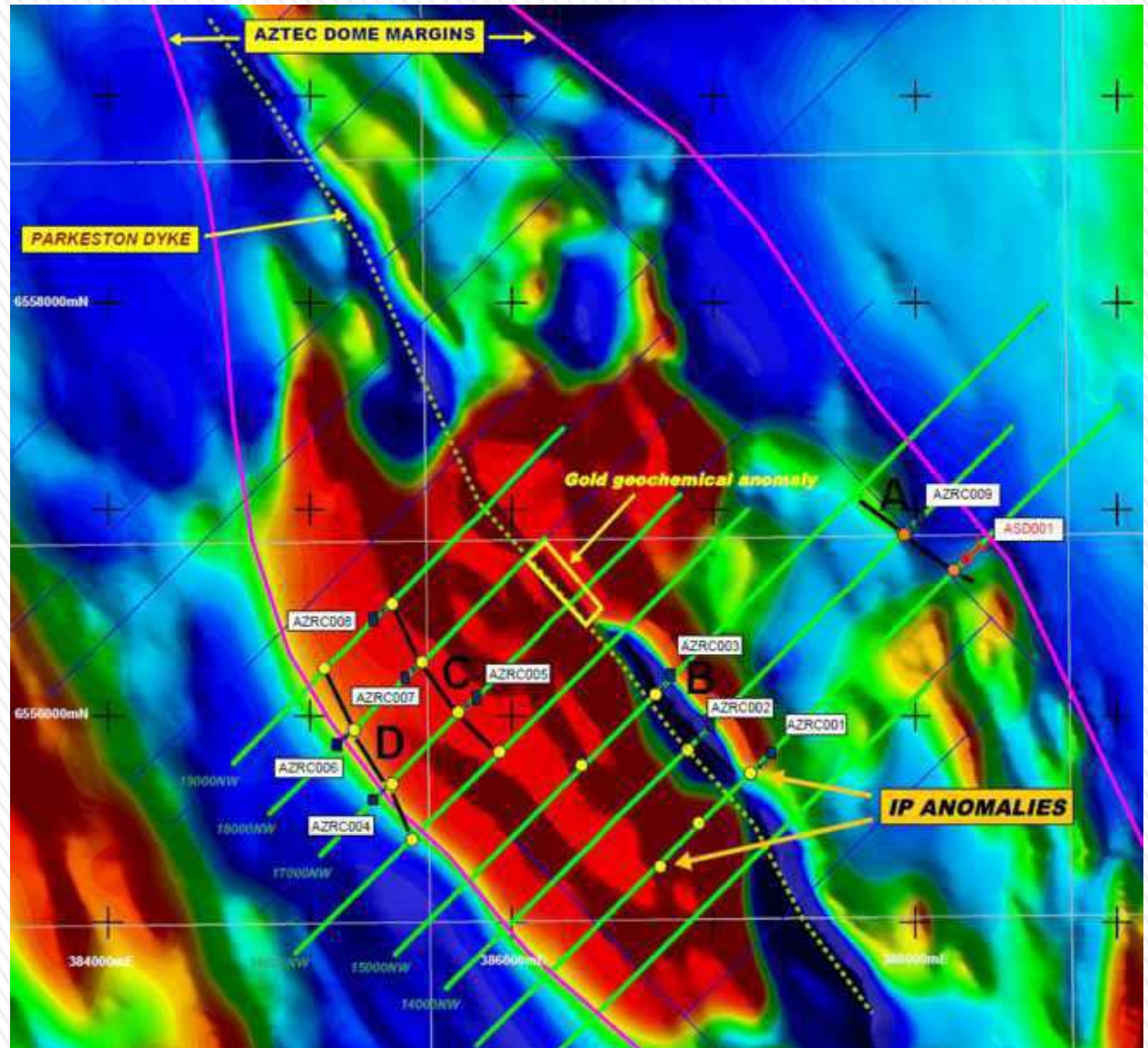


# Kambalda Dome V Aztec Dome





# Aztec Dome Geophysical Map + Drill Holes





# Aztec Dome Drilling

- » Four IP anomalies - Disseminated sulphides in each (up to 20%).

## “Anomaly C”

- » Sulphides with high magnesian basalts
- » Narrow bands of ultramafic, above the main ultramafic horizon(s).

## “Anomaly A”

- » AZRC009 intersected a 143m wide zone (81m –224m) of anomalous nickel values (up to 0.32%).
- » Associated with disseminated sulphides (incl pentlandite, millerite, chalcopyrite), with high chrome (up to 0.35%) and high MgO (up to 22%)
- » Results indicate presence of ultramafic rocks which traditionally host nickel sulphides.
- » Similar mineralisation has been intersected in historic drill hole ASD001, located 300m further south.



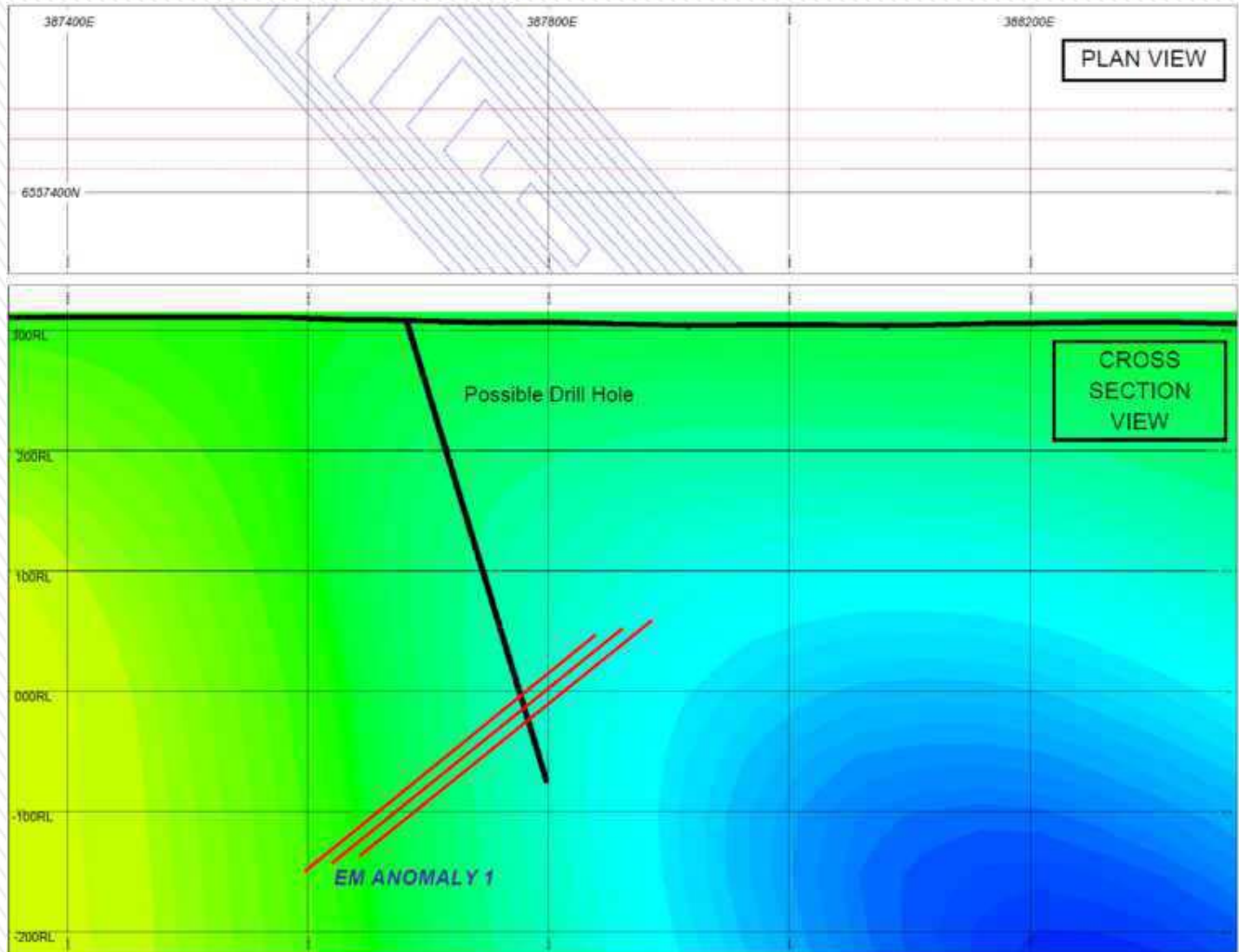


# East Kambalda

- » EM survey identified;
- » 2 strong conductors 140- 400m depth along eastern edge of Aztec Dome.
  
- » **What's Next?**
  
- » Diamond core drilling required to:
  - » test geophysical & geological targets,
  - » better define ultramafic host stratigraphy, and
  - » test for nickel sulphides.
  
- » Coogee Gold Deposit - for sale.

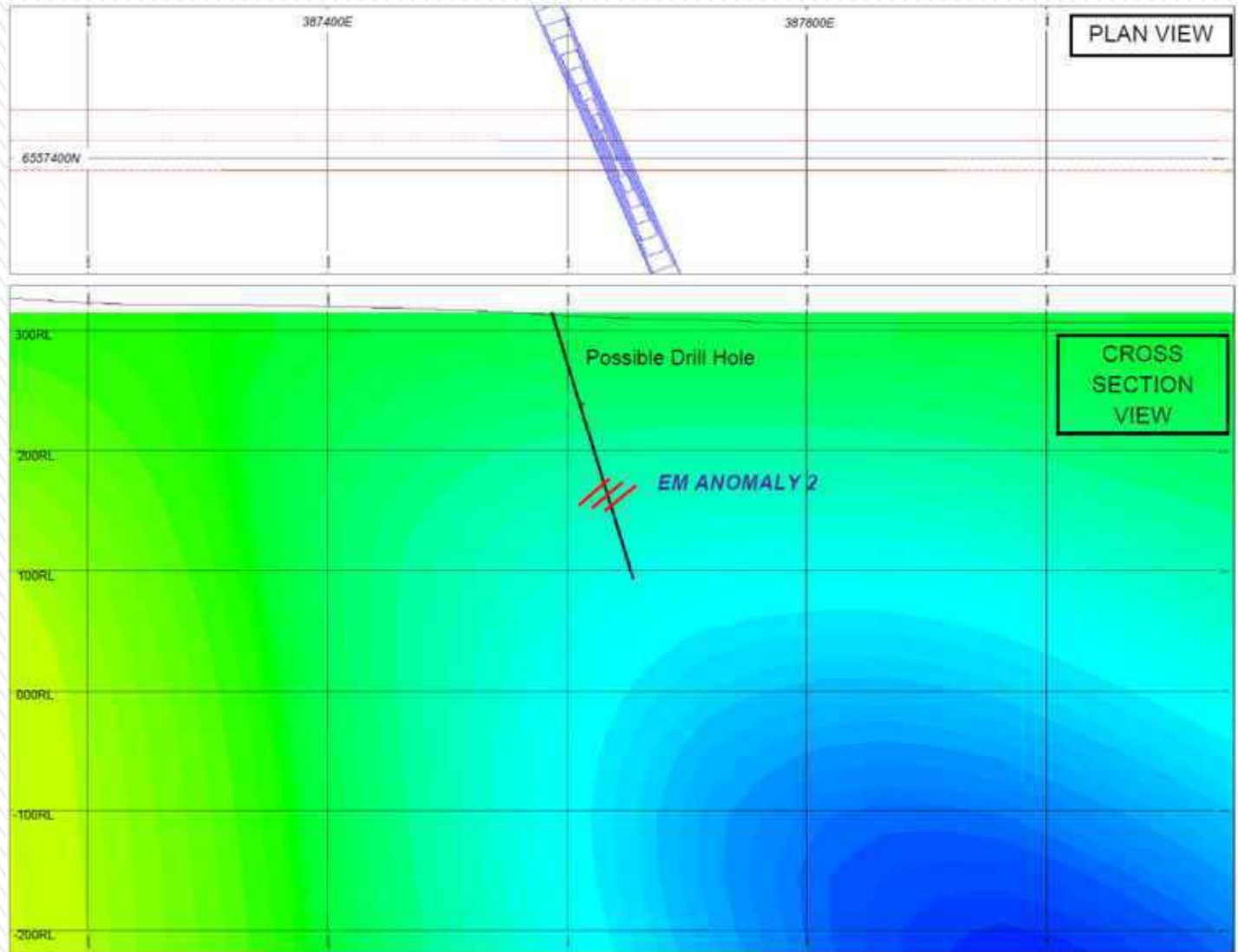


# Aztec Dome EM Anomaly 1





# Aztec Dome EM Anomaly 2





# Where to from Here?

- » Successfully mine Celtic and bank \$2-3m.
- » Plan a \$1m drill program at Wonder Nth/Great Western to add minable resources, (aim is to grow to 350koz).
- » Plan Terrain's next mining campaign at (Wonder Nth/Great Western).
- » Plan a drill program at the Aztec Dome to test the EM anomaly's with Diamond drilling (\$500k).
- » Drilling at Dodgers Well and Black Cat JV to test high grade gold intersections.



**Chris Tomich**

Terrain Minerals Ltd  
Managing Director

+61 (8) 9381 5558 Work

+61 (0) 400 206 734 Mobile

[chris.tomich@terrainminerals.com.au](mailto:chris.tomich@terrainminerals.com.au)

Thank You





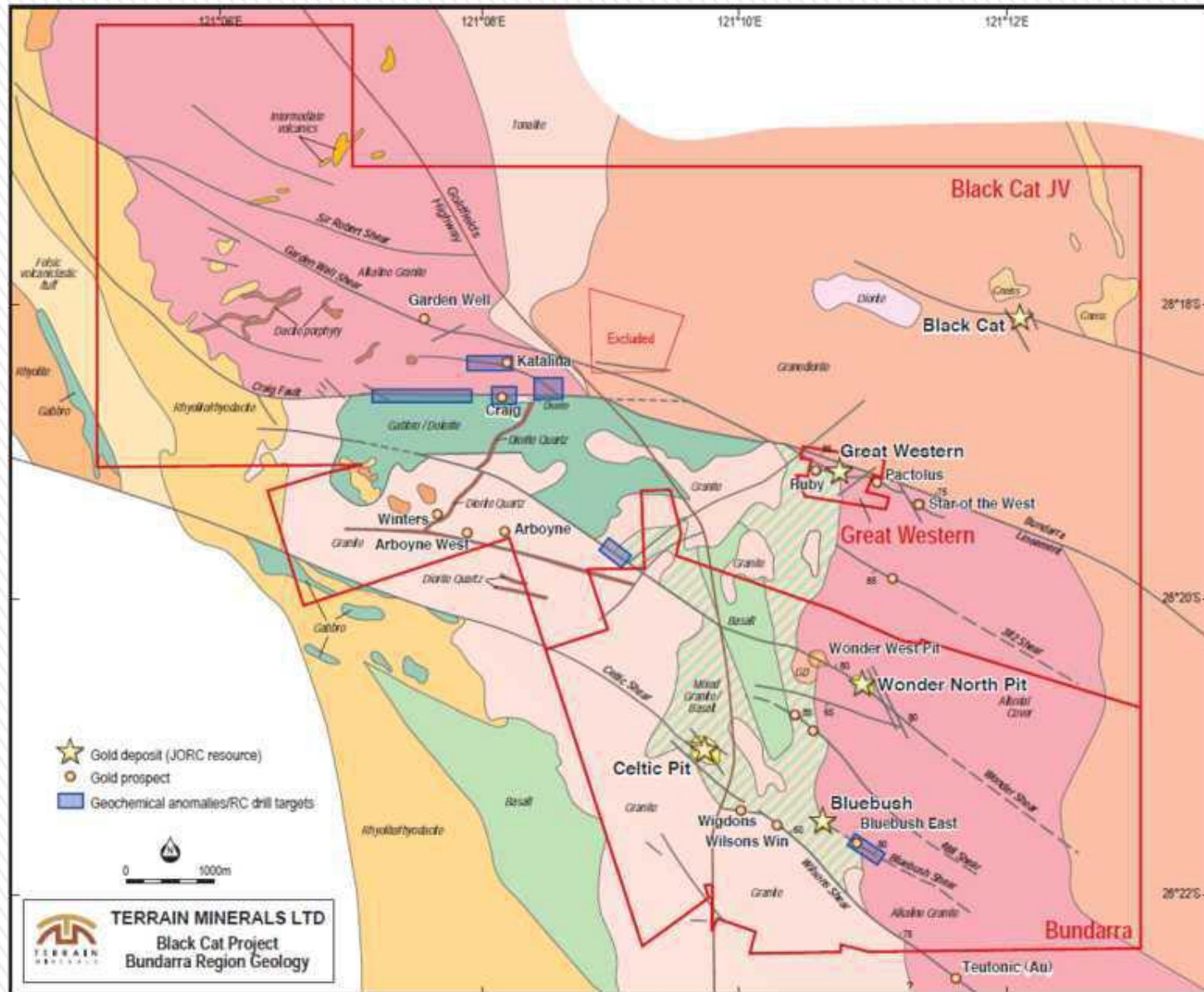


# Bundarra Project: Resources

## (1g/t gold cut-off)

Deposit	Measured		Indicated		Inferred		TOTALS		
	Tonnes ('000)	Grade (g/t)	Tonnes ('000)	Grade (g/t)	Tonnes ('000)	Grade (g/t)	Tonnes ('000)	Grade (g/t)	Ounces('000)
Wonder North	354	2.3	872	2.4	1314	1.9	2540	2.1	172.6
Celtic	684	1.8	199	1.5	204	1.5	1088	1.7	58.1
Great Western	58	3.0	284	2.8	131	2.3	473	2.7	40.9
Black Cat					134	2.5	134	2.5	10.6
Blue-bush					726	1.7	726	1.7	38.9
<b>Total</b>	<b>1096</b>	<b>2.0</b>	<b>1355</b>	<b>2.4</b>	<b>2509</b>	<b>1.9</b>	<b>4961</b>	<b>2.0</b>	<b>321.2</b>

# Bundarra – Regional Map



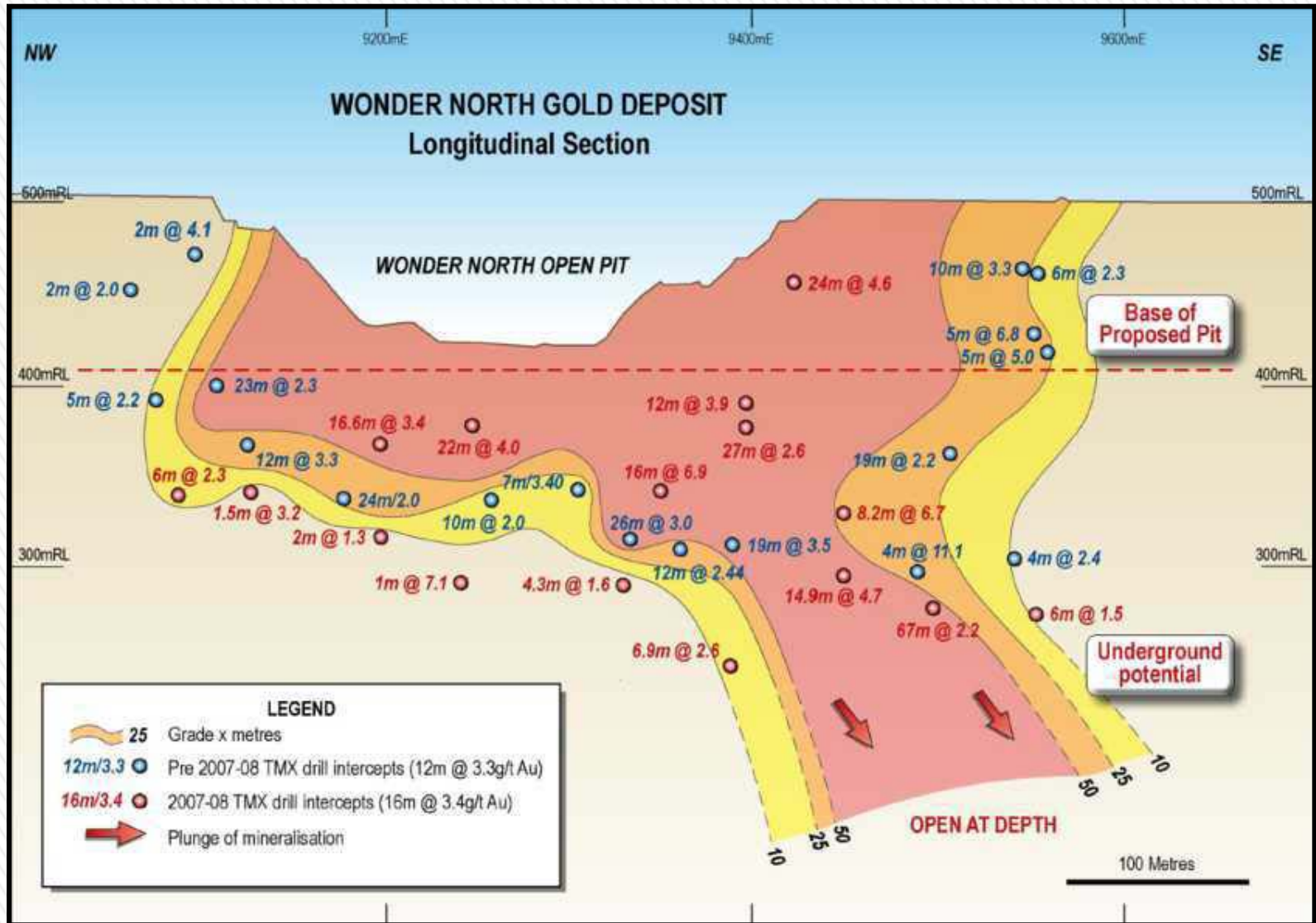


# Wonder North Pit





# Wonder North Deposit





# DODGERS WELL PROJECT

