



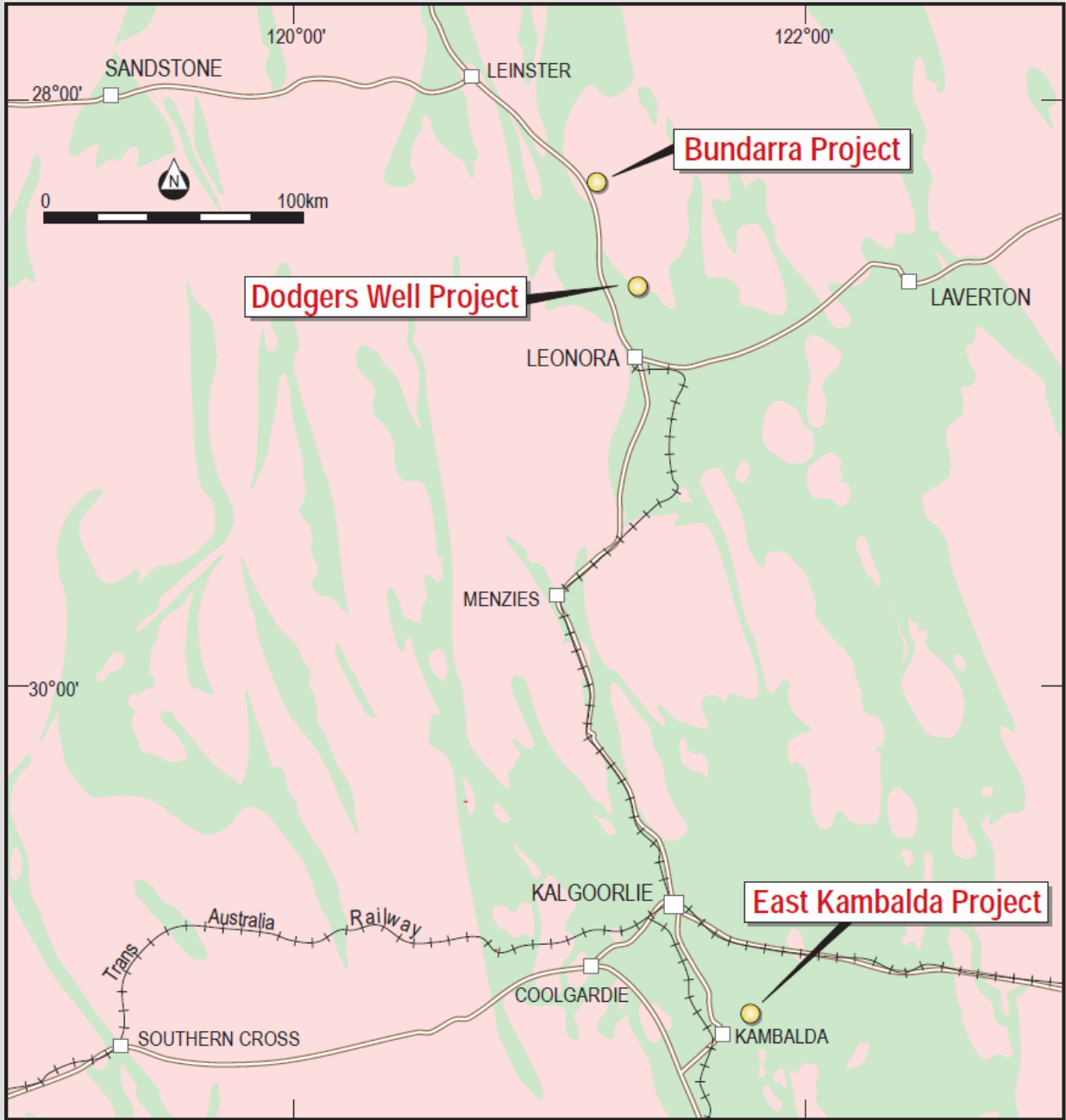
TERRAIN
MINERALS

TERRAIN MINERALS LTD

AGM: NOVEMBER 2009



PROJECT LOCATIONS





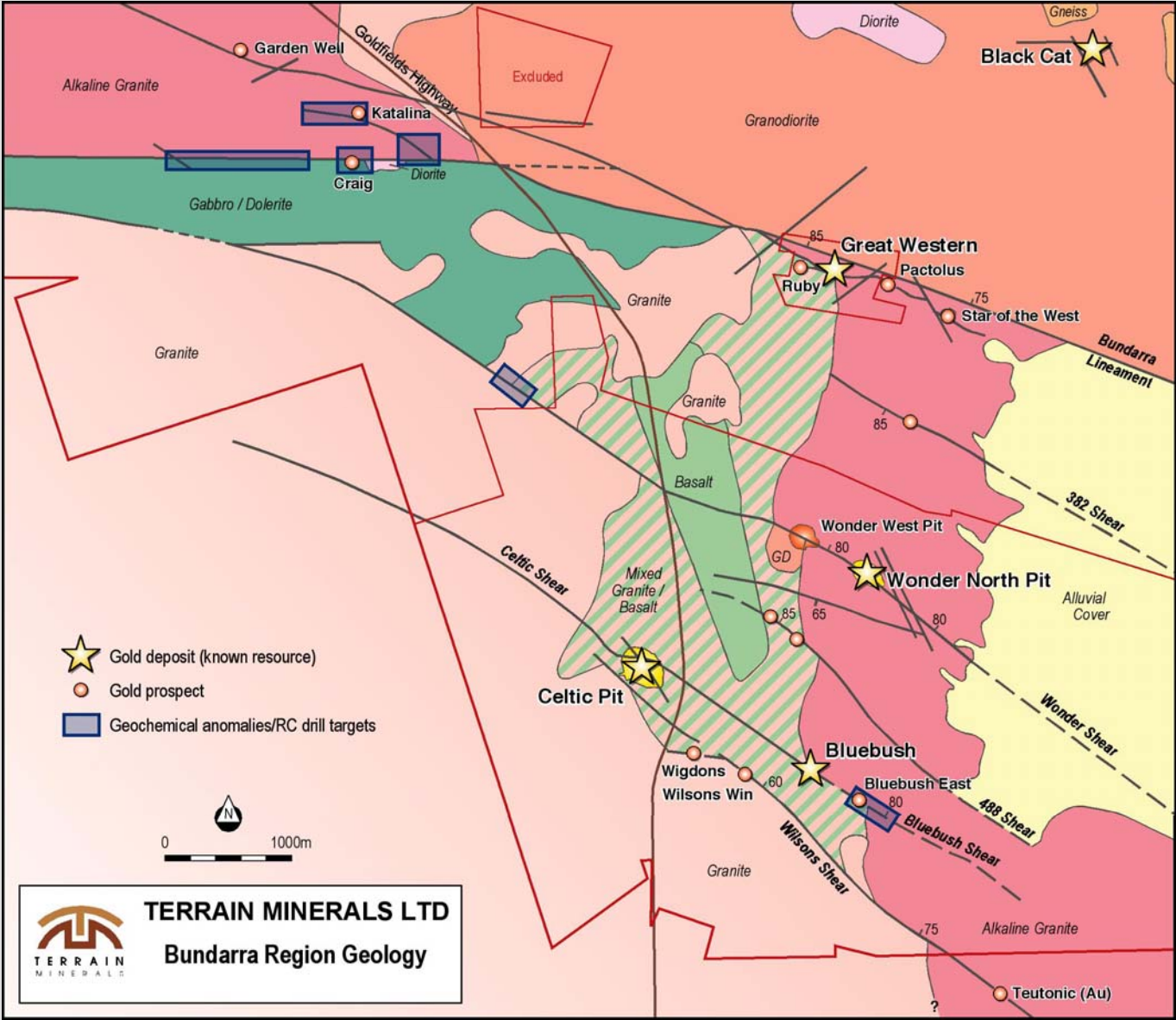
BUNDARRA PROJECT: RESOURCES

(1g/t gold cut-off)

Resource	Measured		Indicated		Inferred		TOTALS		
Deposit	Tonnes ('000)	Grade (g/t)	Tonnes ('000)	Grade (g/t)	Tonnes ('000)	Grade (g/t)	Tonnes ('000)	Grade (g/t)	Ounces ('000)
Wonder North	354	2.3	872	2.4	1314	1.9	2540	2.1	172.6
Celtic	684	1.8	199	1.5	204	1.5	1088	1.7	58.1
Great West.	58	3.0	284	2.8	131	2.3	473	2.7	40.9
Black Cat					134	2.5	134	2.5	10.6
Blue-bush					726	1.7	726	1.7	38.9
Total	1096	2.0	1355	2.4	2509	1.9	4961	2.0	321.2



BUNDARRA PROJECT



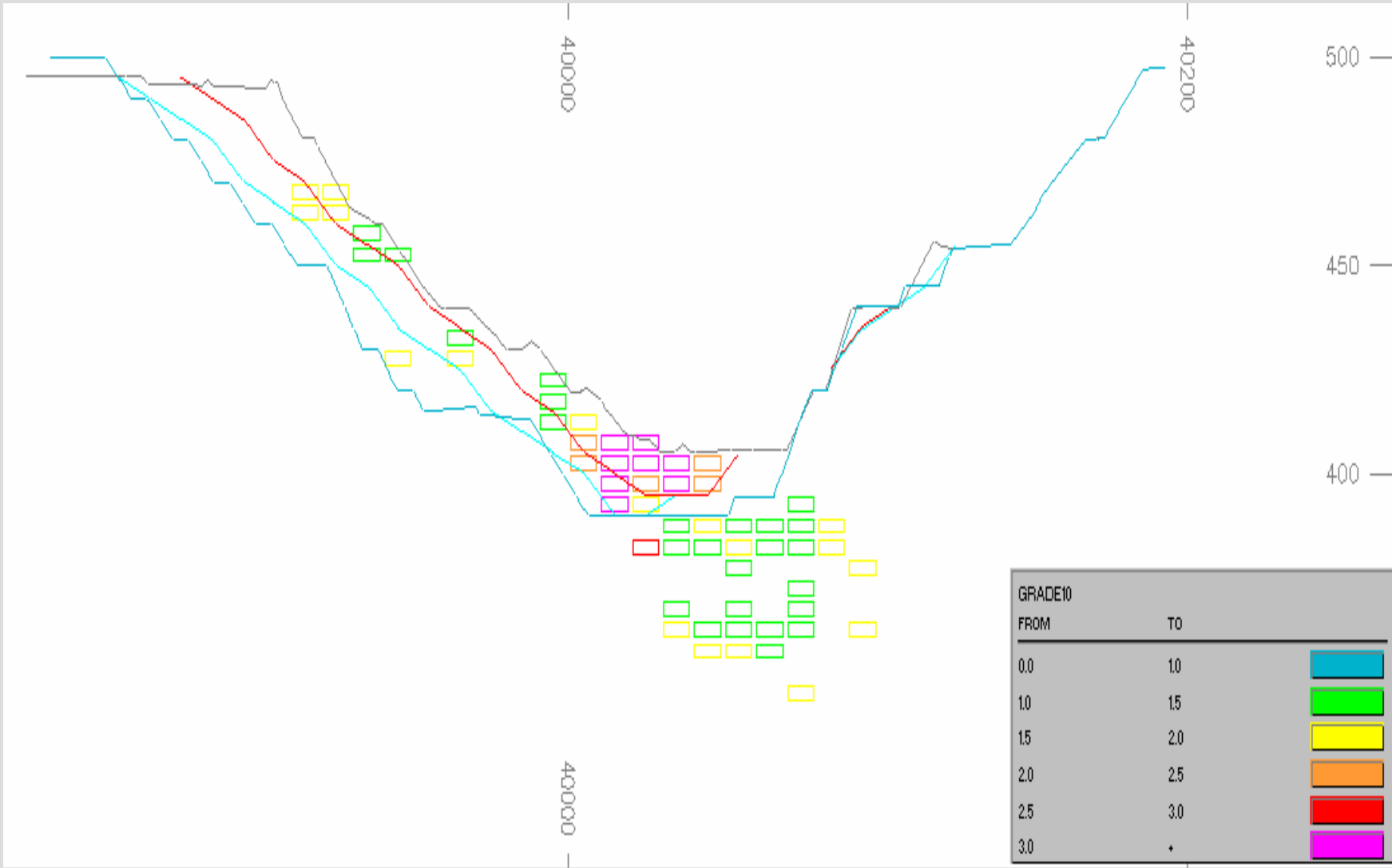


CELTIC OPEN CUT (Looking East)





CELTIC OPEN CUT Cross Section 8217E





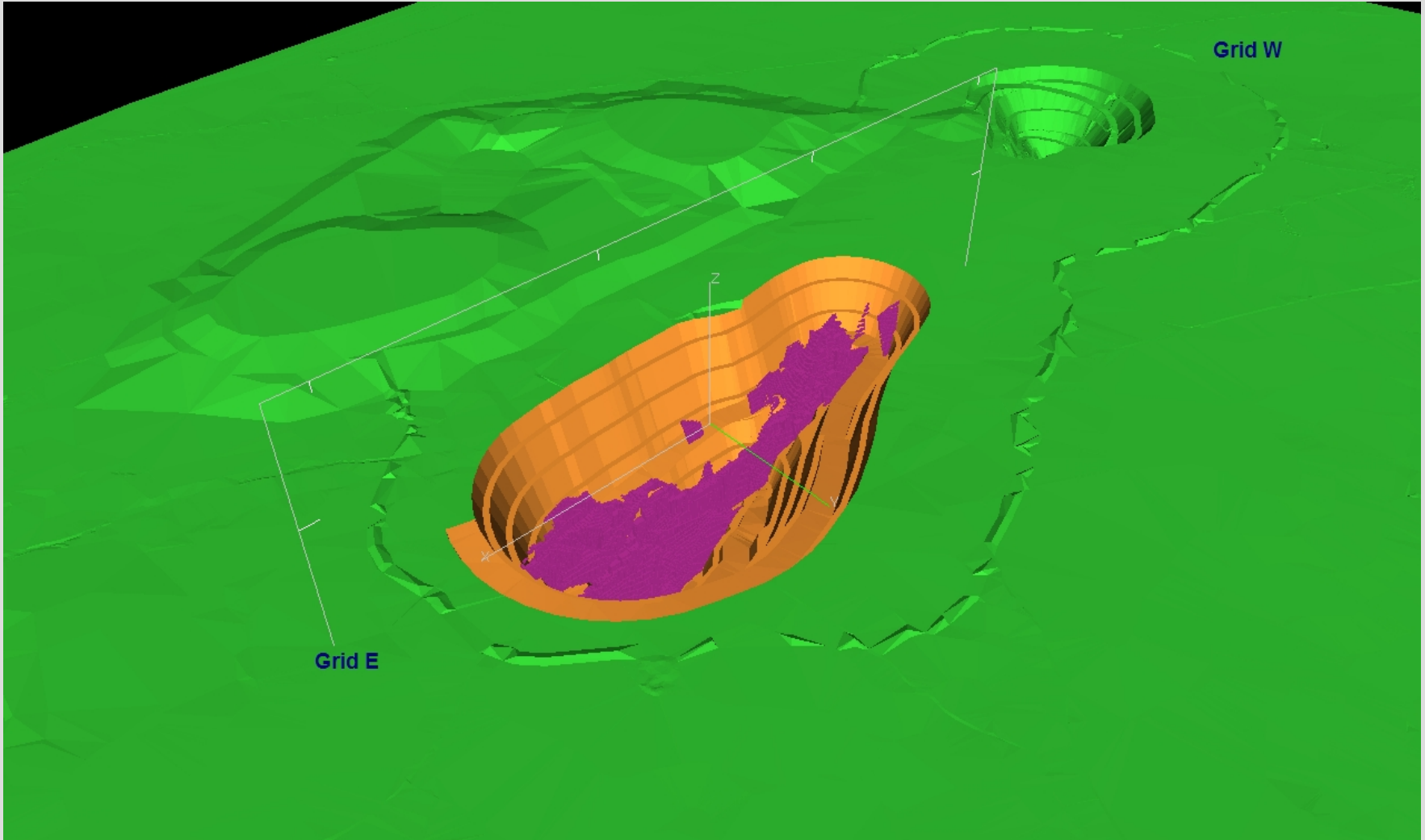
WONDER NORTH OPEN CUT

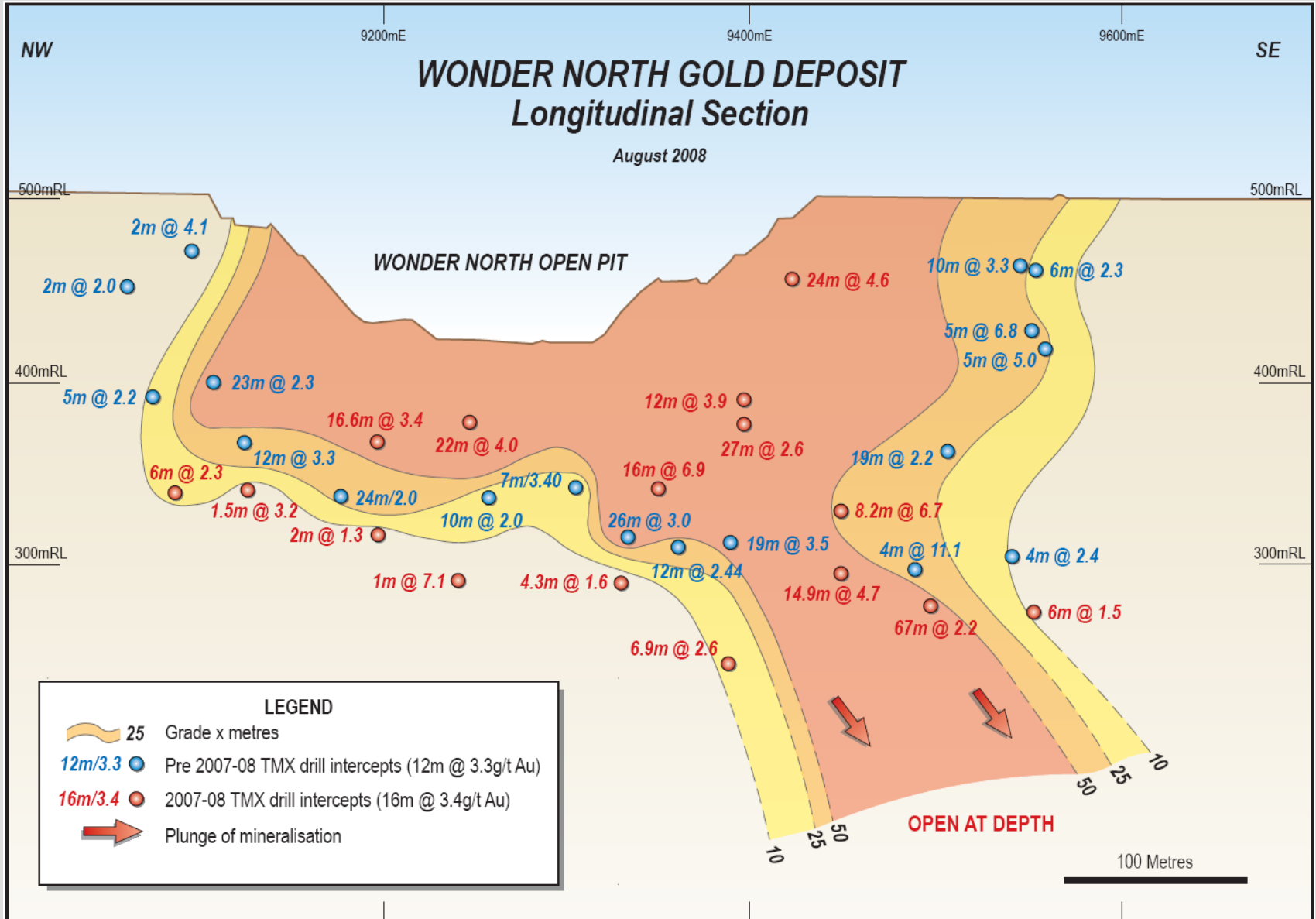




WONDER NORTH OPEN CUT

Pit Optimisation 697,200t @ 2.45g/t gold (55,326 oz)

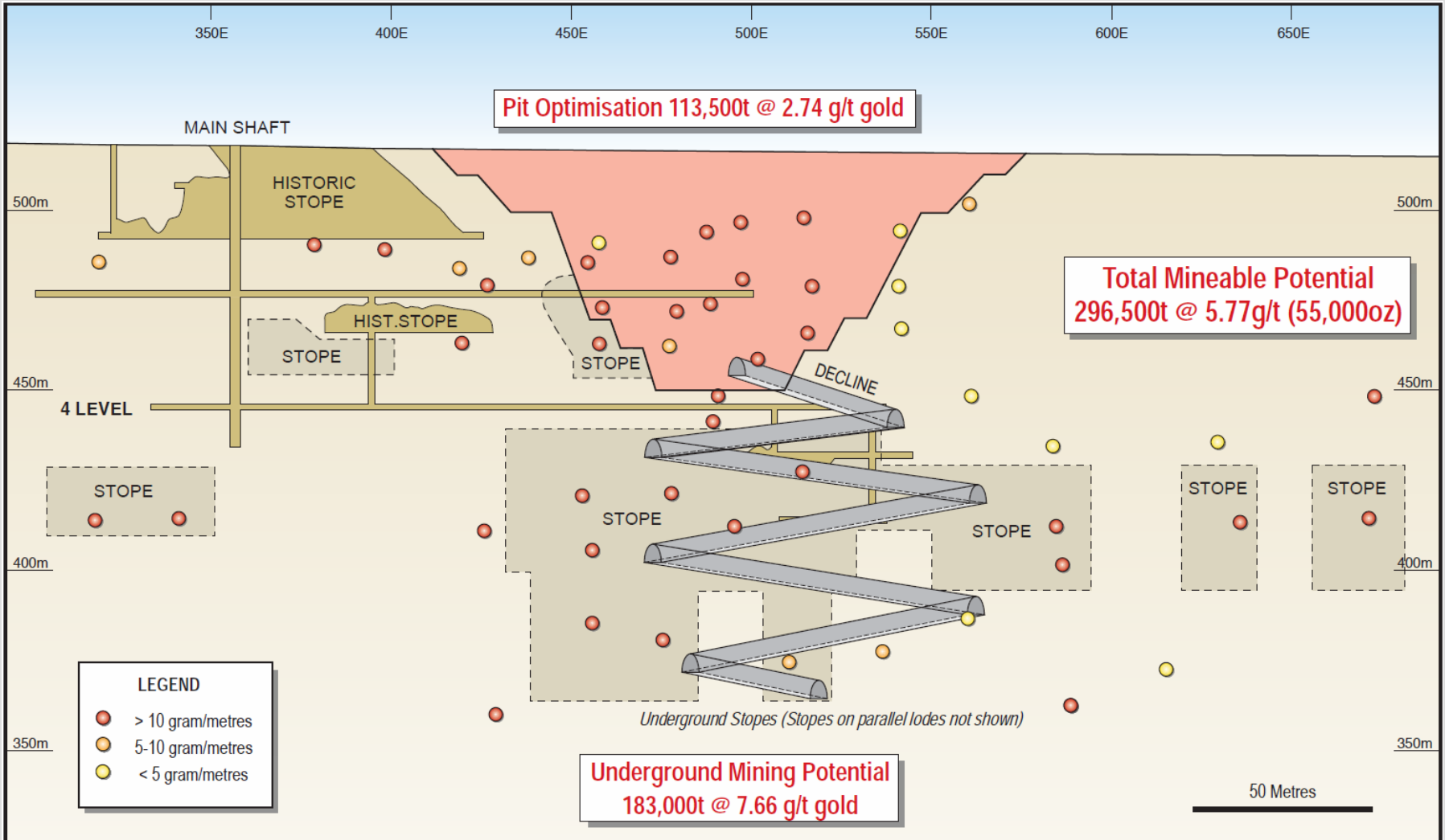






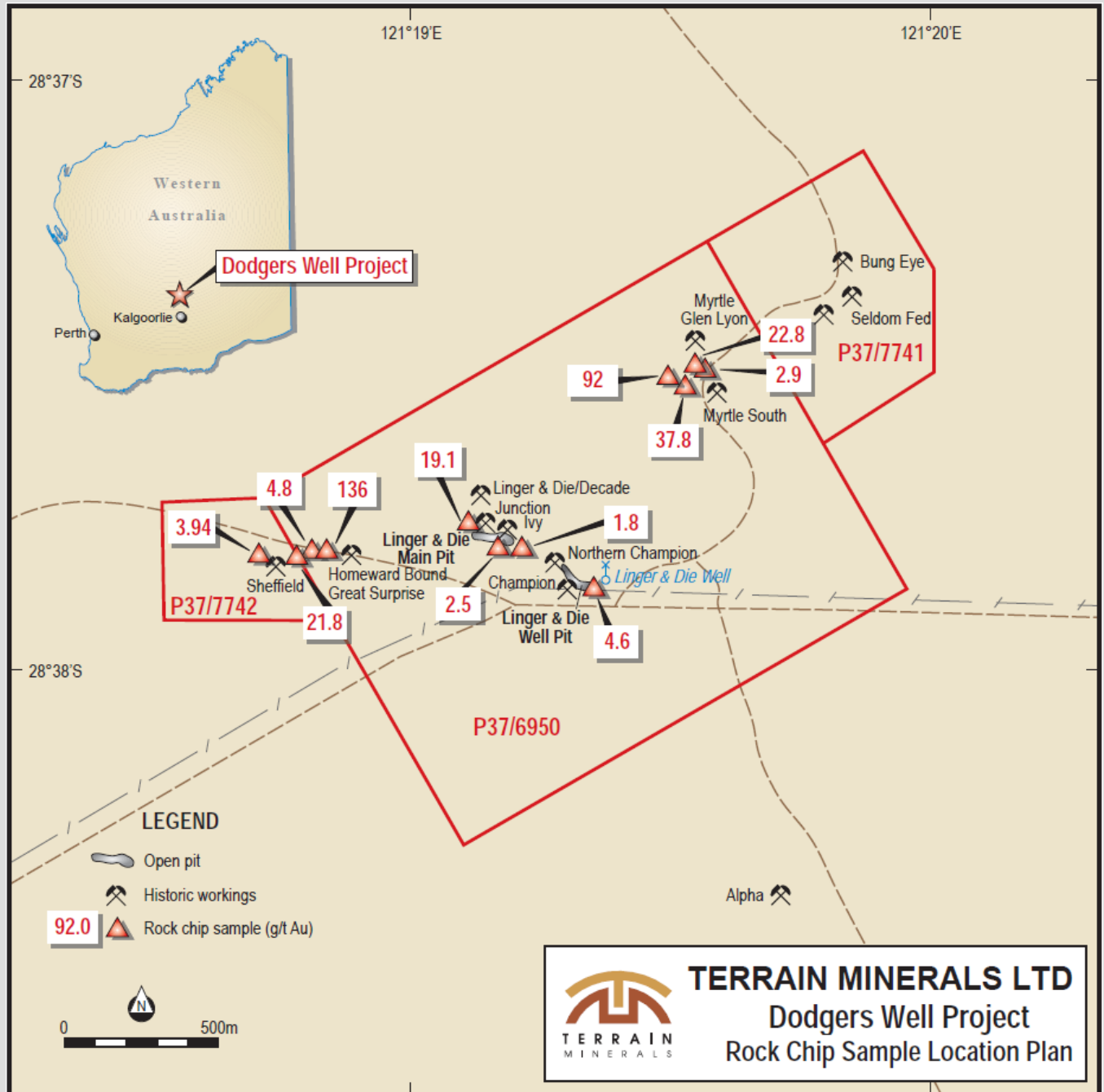
GREAT WESTERN DEPOSIT MINE PLAN

Longitudinal Section





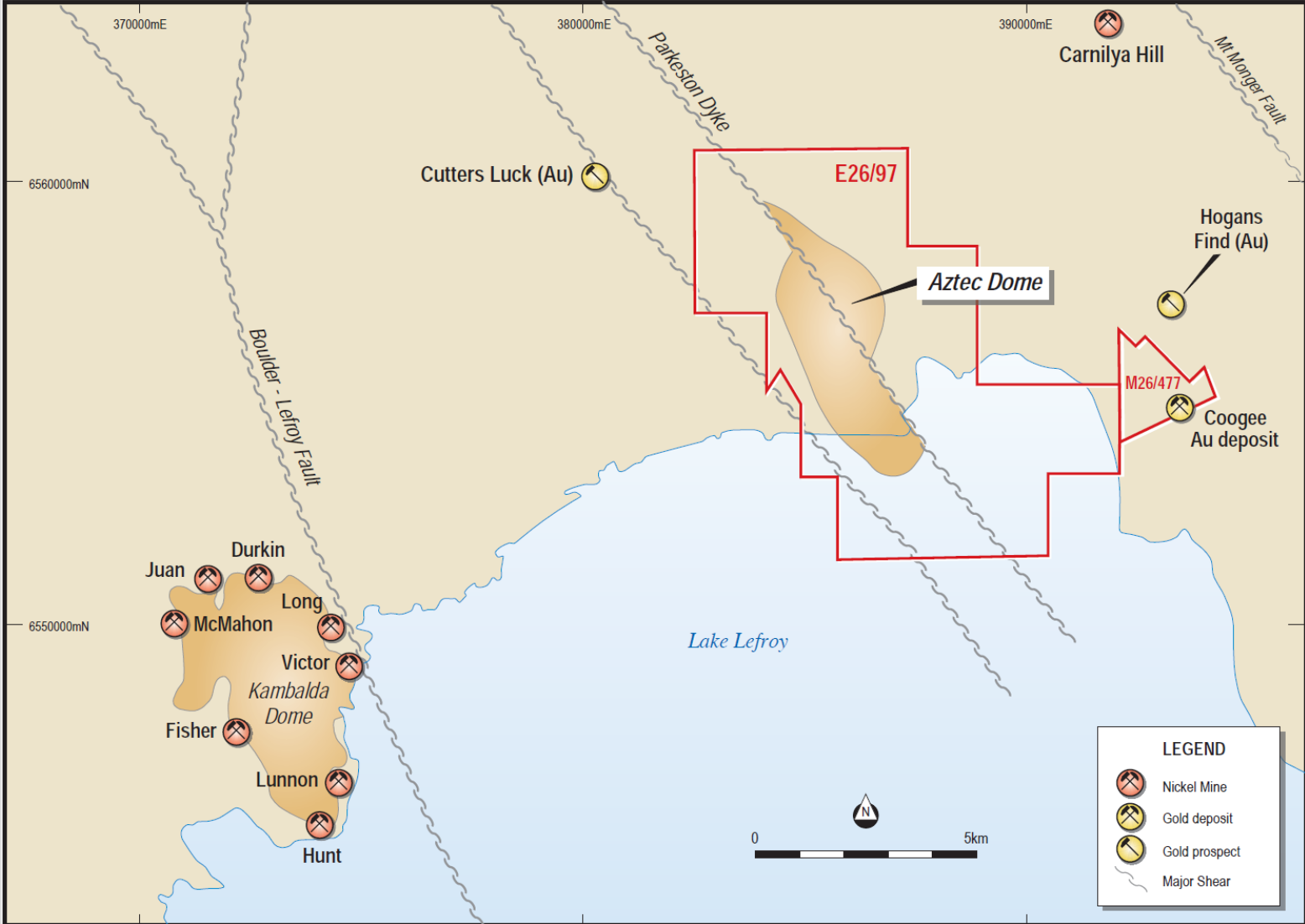
DODGERS WELL PROJECT



TERRAIN MINERALS LTD
Dodgers Well Project
Rock Chip Sample Location Plan



EAST KAMBALDA PROJECT





COOGEE GOLD DEPOSIT

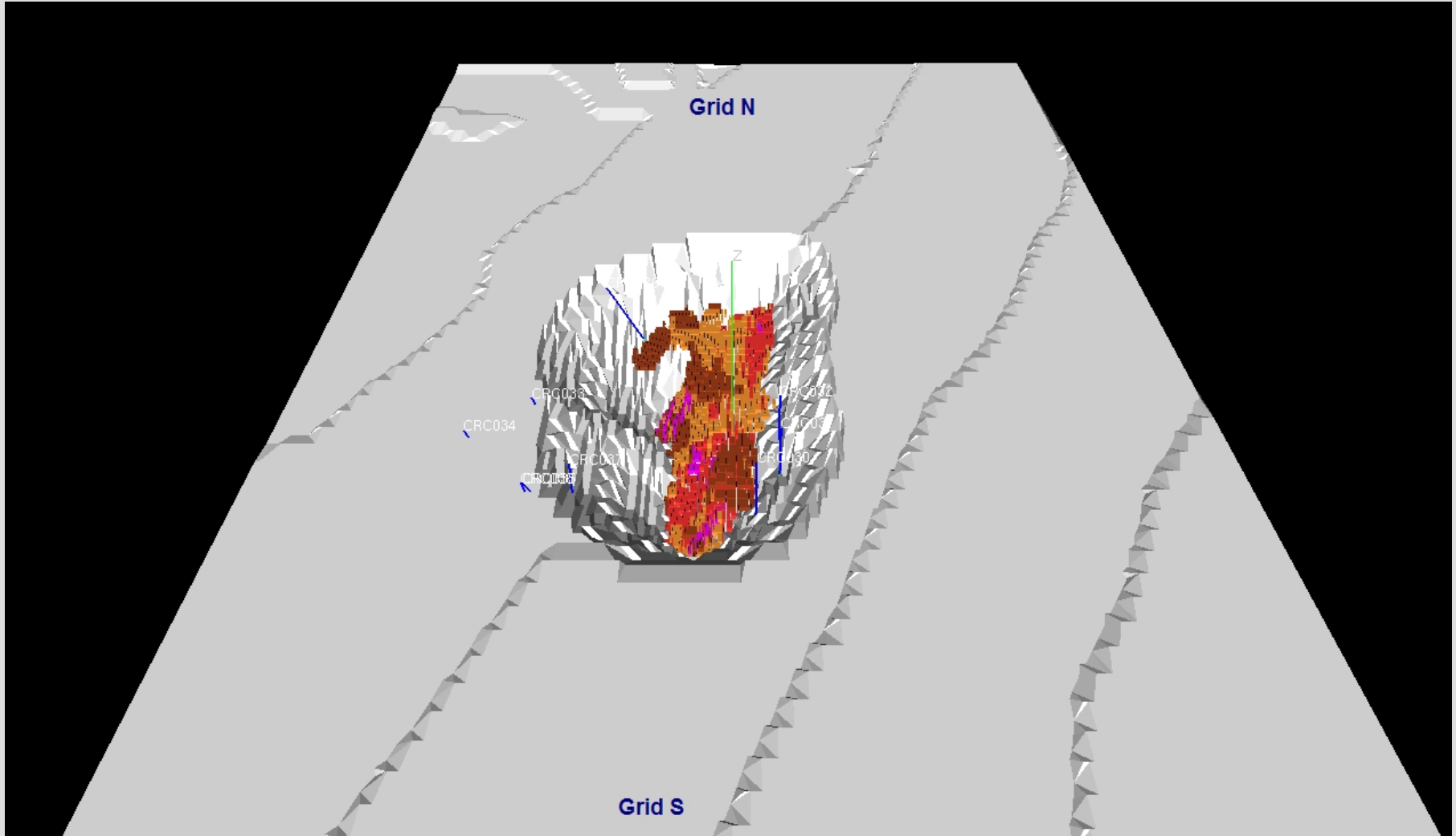
RESOURCES (1g/t gold cut off)			
	Tonnes	Grade (g/t)	Ounces
Indicated	137,800	4.1	18,250
Inferred	139,700	3.9	16,620
Total Resources	277,500	3.9	34,870



COOGEE GOLD DEPOSIT

Potential Open Pit

102,000t @ 3.82g/t gold (1g/t gold cut-off)

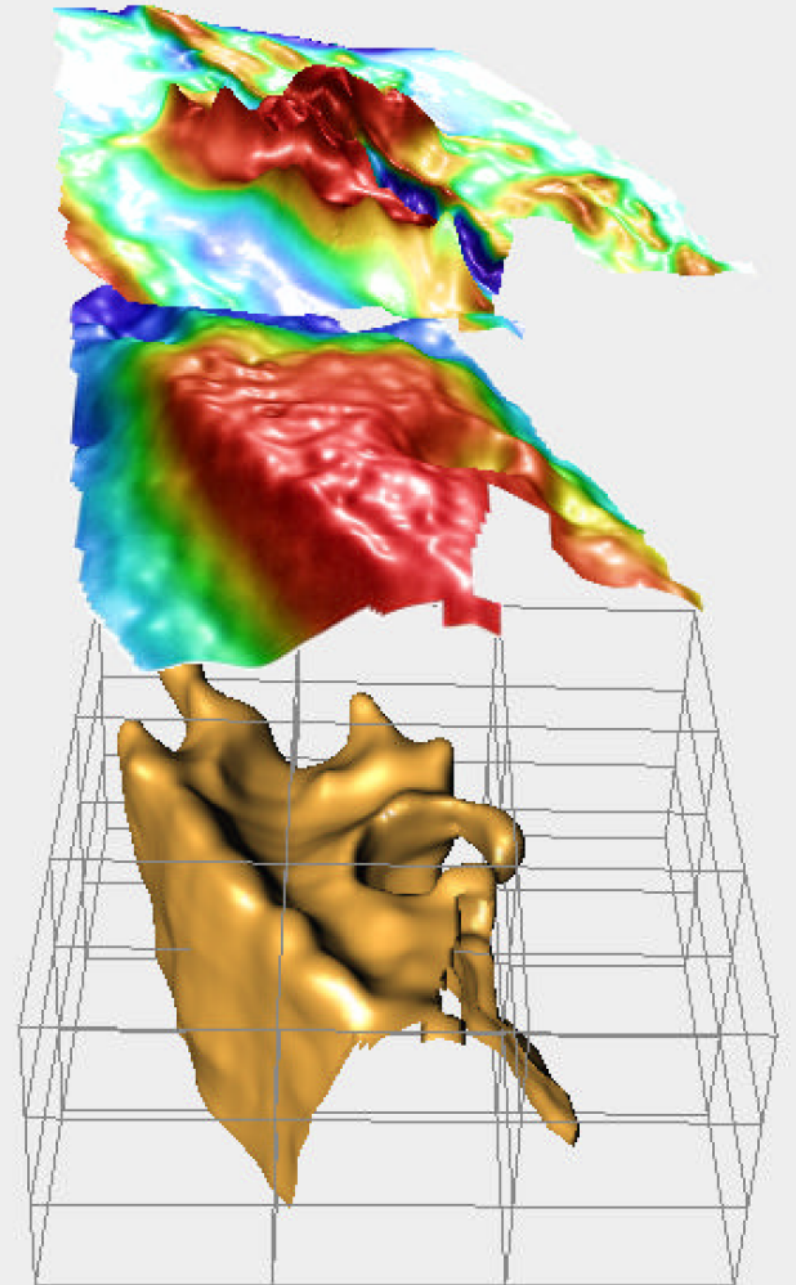




The RTP magnetic and Bouguer gravity data (as 3D surfaces) over the density isosurface.

**AZTEC
DOME**

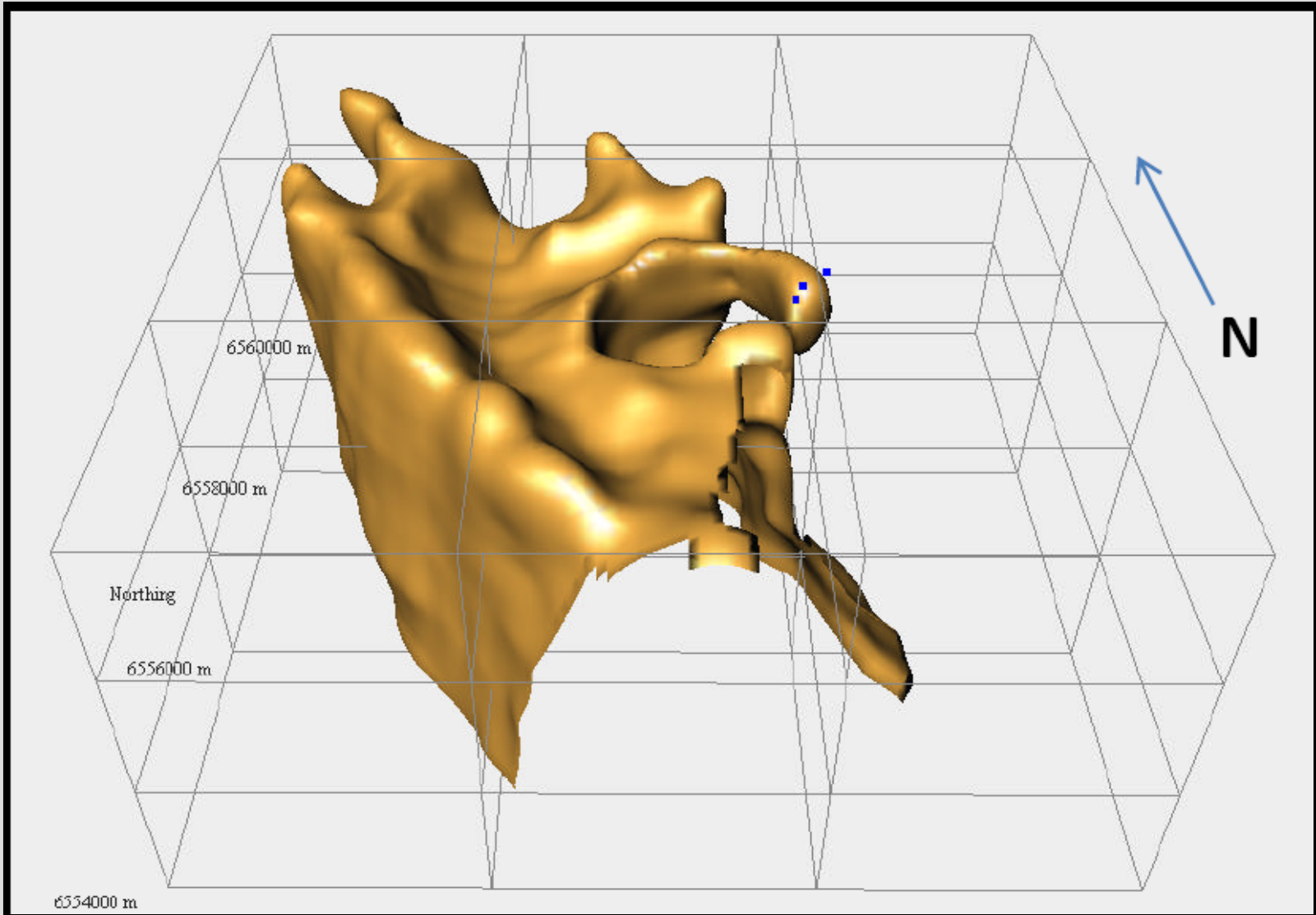
**Geophysical
Signature**





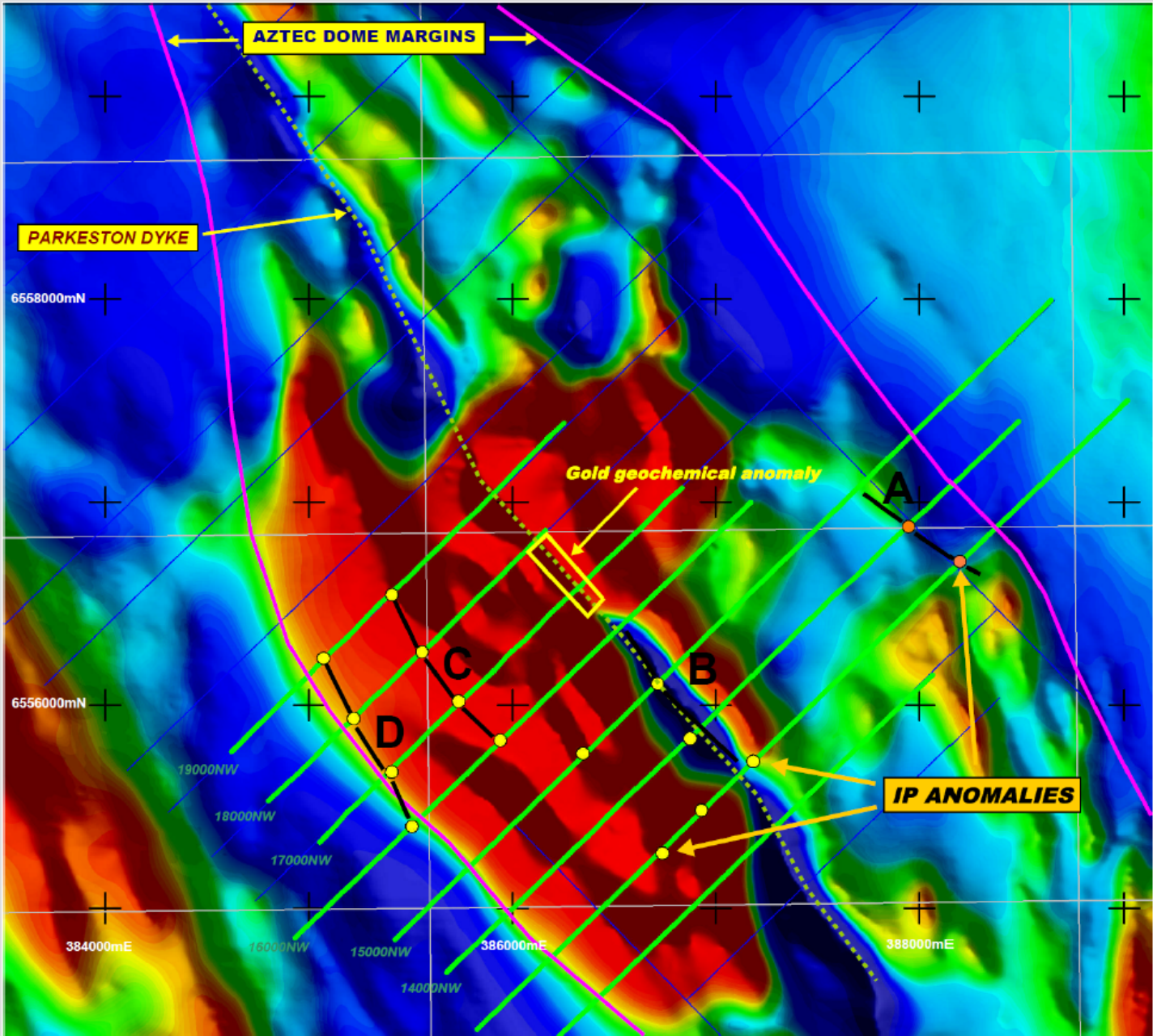
AZTEC DOME PROSPECT

3D Ultramafic Surface





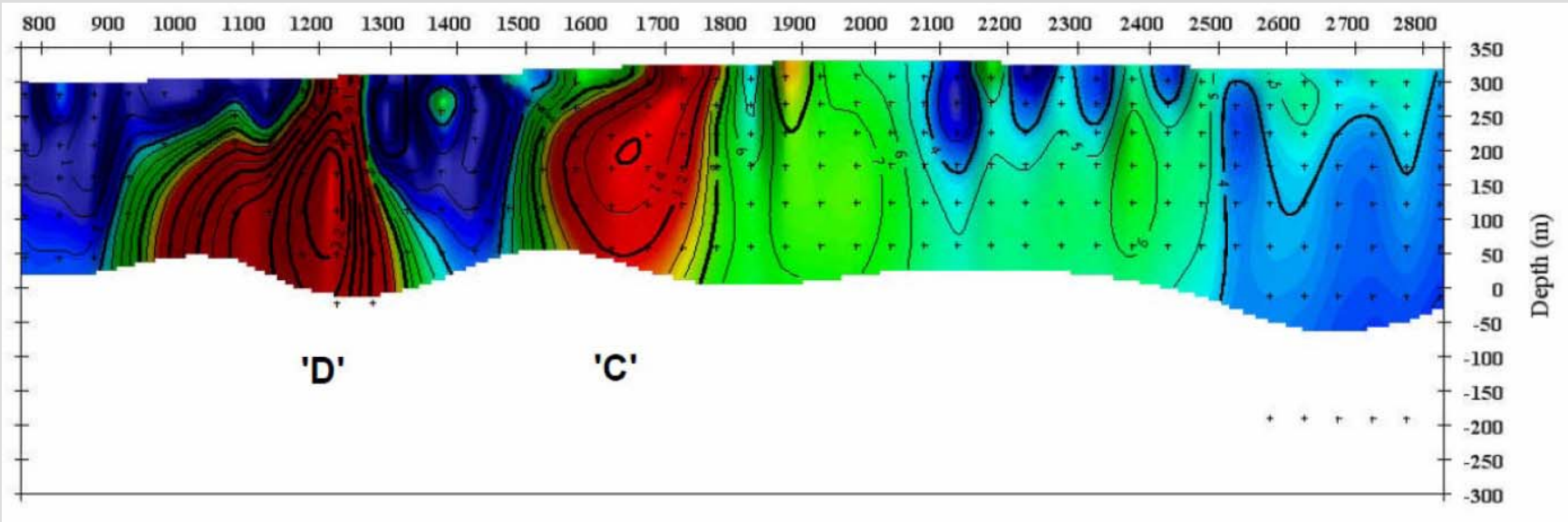
AZTEC DOME: DRILL TARGETS





AZTEC DOME: IP ANOMALIES

Section 18000 NW





“GOING FORWARD”

Bundarra & Dodgers Well

- **Significant short to mid-term cash flow from known resources**
- **Stand alone project or extend cash flow**

East Kambalda

- **Coogee: sale or develop**
- **Aztec Dome: repeat of Kambalda Dome**



COMPETENT PERSONS STATEMENT

The Mineral Resource estimates for the Wonder North, Bluebush, Great Western and Black Cat deposits were completed by Mr. Shane Fieldgate of CSA Global Pty Ltd, who is a Member of the Australian Institute of Geoscientists (MAIG) and is a Competent Person as defined by the Australasian Code for the Reporting of Exploration Results Mineral Resources and Ore Reserves (JORC Code) 2004 Edition and who consents to the inclusion in this report of the matters based on his information in the form and context in which it appears.

The information in this presentation that relates to Exploration Results is based on information compiled by Mr Keith Wells, who is a full-time employee of Terrain Minerals Ltd. Mr Wells is a member of The Australian Institute of Geoscientists and has sufficient experience which is relevant to the style of mineralisation and type of deposit under consideration and to the activity which he is undertaking to qualify as a Competent Person as defined in the 2004 Edition of the 'Australasian Code for Reporting of Exploration Results, Mineral Resources and Ore Reserves'. Mr Wells consents to the inclusion in the presentation of the matters based on information in the form and context in which it appears.